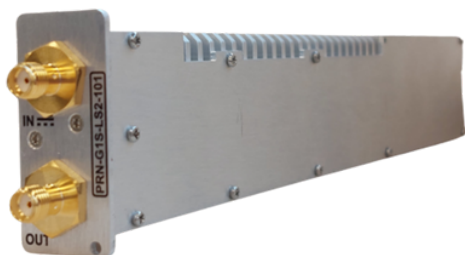


GENUS DC Inserter Summary

The Piranha series of power inserters provide DC powering options in a compact 1U high 19" chassis for a range of components and devices in satellite ground station RF and power distribution chains.



- LNB powering
- Custom voltages
- BUC powering
- 22kHz tone
- 10MHz multiplexing

PRN Modules					
Model Number	Module Type	Frequency	Voltage	Current Rating	10MHz
PRN-G1S-LS2-101	LNB	850-2450MHz	13/18VDC 22kHz	500mA	Yes
PRN-G1S-LS2-102	LNB	850-2450MHz	13/18VDC 22kHz	500mA	No
PRN-G1S-LS2-106	LNB	850-2450MHz	Custom 13-24VDC in 1V steps 22kHz	1A	Yes
PRN-G1S-LS2-107	LNB	850-2450MHz	Custom 13-24VDC in 1V steps 22kHz	1A	No
PRN-G1S-LY2-010	LNB	3-30MHz	Custom 13-24VDC in 1V steps 22kHz	1A	No
PRN-G1S-BS2-003	BUC	850-2450MHz	24V	2A	No

Note 1: The specification is subject to regular reviews and will be updated from time to time as part of our continuing product development and improved spec accuracy.