



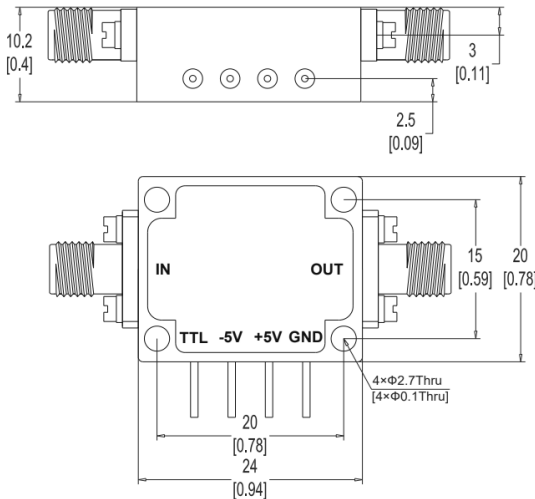
# Absorptive SPST Pin Switch

## 6-12 GHz

### RF Connectors

- 50Ω SMA Female

### Physical Dimensions (±0.1mm)



Control Input TTL	Signal Path States
TTL	
0	ON
1	OFF

General Specification	
Frequency Range	6 - 12 GHz
Insertion Loss	2.0 dB max.
VSWR	1.5 max.
Isolation	80 dB min.
Switching Speed	100 nsec max.
CW RF Power, Operating	30 dBm max.
DC Bias	+5 V±0.5 V @ 50 mA max -5 V±0.5 V @ 50 mA max
TTL Control Voltage	+5V/0V
Input RF power	+30dBm
Vibration	25g rms (15 degree 2KHz)

Environmental Specification	
Operating Temperature	-45°C to +85°C
Storage Temperature	-55°C to +125°C
Environment	Indoor
Humidity	100% RH at 35c, 95%RH at 40 deg c
Shock	20G for 11msc

Mechanical Specification	
RF Connectors	50Ω SMA Female
Dimensions	24 x 20 x 10.2mm (excl conns)
Material	Aluminium
Finish	Gold Plating

Note 1: The specification is subject to regular reviews and will be updated from time to time as part of our continuing product development and improved spec accuracy.  
 Note 2: Operation beyond the quoted limits stated above may cause instantaneous and permanent damage.  
 Note 3: Switching speed is defined as 50% TTL to 90% RF (t-on) and 50% TTL to 10% RF (t-off).

