



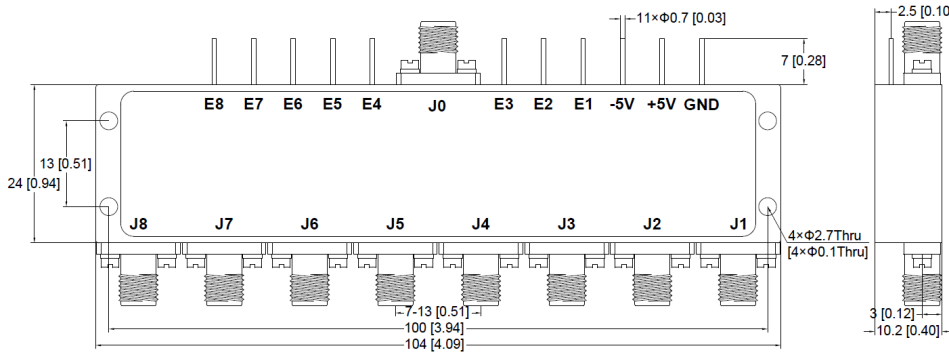
Model Number:
SWC-SP8T1P05A162003S

RF Components

PIN Diode Absorptive Switch

1 - 2 GHz

- Single pole eight throw PIN diode absorptive switch
 - TTL control
- Available with RF connector options:
- 50 Ω SMA



Switch

| RF Parameters | | |
|------------------------|-----|----------------|
| SWC-SP8T1P05A162003S | | |
| Frequency Range | | 1 - 2 GHz |
| RF Connectors | | 50Ω SMA Female |
| Insertion Loss (dB) | Max | 1.8 |
| Switching Speed (nsec) | Max | 100 |
| VSWR | Max | 1.5:1 |
| Isolation (dB) | Min | 80 |

Switching speed is defined as 50% TTL to 90% RF (t-on) and 50% TTL to 10% RF (t-off).

| Absolute Maximum Ratings | |
|--------------------------|---|
| Biasing | +5V, -5V |
| DC Bias | +5V±0.5V@ 400mA max -5V±0.5V@ 50mA max |
| TTL Control Voltage | +5V/ 0V |
| Input RF power | +30dBm |

| Environmental | |
|-----------------------|-------------------------------------|
| Operating Temperature | -45°C to +85°C |
| Storage Temperature | -55°C to +125°C |
| Vibration | 25g rms (15 degree 2KHz) |
| Humidity | Max 100% RH at 35°C, 95% RH at 40°C |
| Shock | 20G for 11msec |

| Truth Table | | | | | | | | Signal Path State |
|-------------------|----|----|----|----|----|----|----|-------------------|
| Control Input TTL | | | | | | | | |
| E8 | E7 | E6 | E5 | E4 | E3 | E2 | E1 | |
| 1 | 1 | 1 | 1 | 1 | 1 | 1 | 0 | J0-J1 |
| 1 | 1 | 1 | 1 | 1 | 1 | 0 | 1 | J0-J2 |
| 1 | 1 | 1 | 1 | 1 | 0 | 1 | 1 | J0-J3 |
| 1 | 1 | 1 | 1 | 0 | 1 | 1 | 1 | J0-J4 |
| 1 | 1 | 1 | 0 | 1 | 1 | 1 | 1 | J0-J5 |
| 1 | 1 | 0 | 1 | 1 | 1 | 1 | 1 | J0-J6 |
| 1 | 0 | 1 | 1 | 1 | 1 | 1 | 1 | J0-J7 |
| 0 | 1 | 1 | 1 | 1 | 1 | 1 | 1 | J0-J8 |

Broadcast



Marine Oil & Gas



SNG & VSAT



Satellite Teleport

