

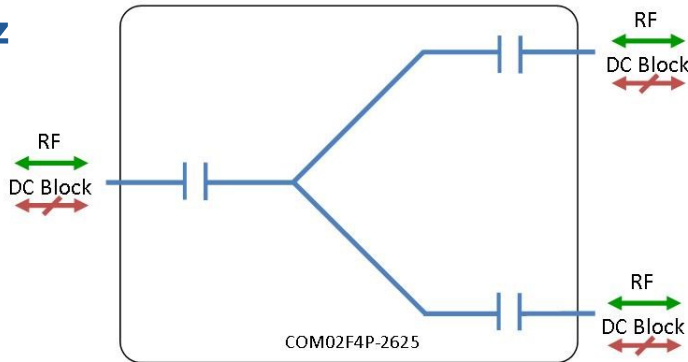


Model Number:
COM02F4P-2625

RF Components

2-Way Passive IF-Band Splitter/Combiner

50-1000 MHz



- Equi-Phase & Equi-Amplitude
- All RF output ports DC blocked

Available with RF connector options:

- 50 Ω SMA
- 50 Ω N-type
- 50 Ω BNC
- 75 Ω BNC
- 75 Ω F-type.



50-1000 MHz

Operating frequency range. IF-Band ready



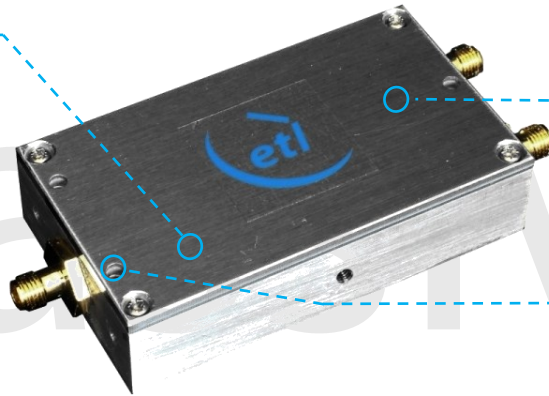
Compact

Housed in rugged compact enclosure



Flexible Mounting

Tapped screw & through hole mounting options



RF Parameters					
COM02F4P-2625-XXXX	S5S5	N5N5	B5B5	B7B7	F7F7
Frequency Range	50-1000 MHz				
RF Connectors	50Ω SMA	50Ω N-Type	50Ω BNC	75Ω BNC	75Ω F-Type
Mean Insertion Loss (dB)	0.4±0.3	0.4±0.3	0.4±0.3	0.7±0.3	0.7±0.3
Flatness ± (dB)	0.4	0.4	0.4	0.6	0.6
Input Return Loss (dB)	Typ.	26	26	26	25
	Min	21	21	21	18
Output Return Loss (dB)	Typ.	28	28	28	18
	Min	19	19	19	12
Isolation (dB)	Typ.	21	21	21	20
Amplitude Balance (dB)	≤0.5	≤0.5	≤0.5	≤0.5	≤0.5
Phase Balance (Φ)	≤5°	≤5°	≤5°	≤5°	≤5°

The given Insertion Loss specified is the loss above the theoretical limit for a lossless divider

Broadcast



Marine Oil & Gas



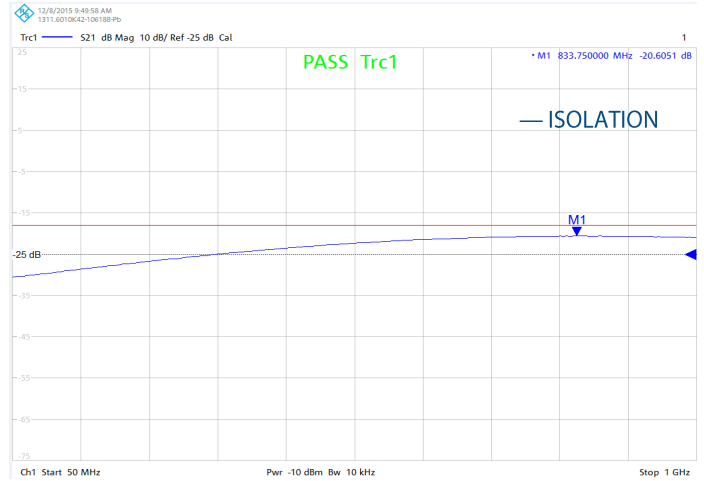
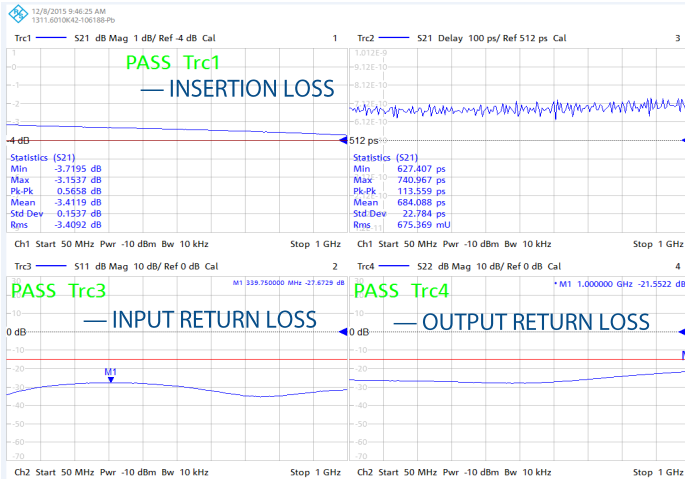
SNG & VSAT



Satellite Teleport



Technical specifications and operating parameters

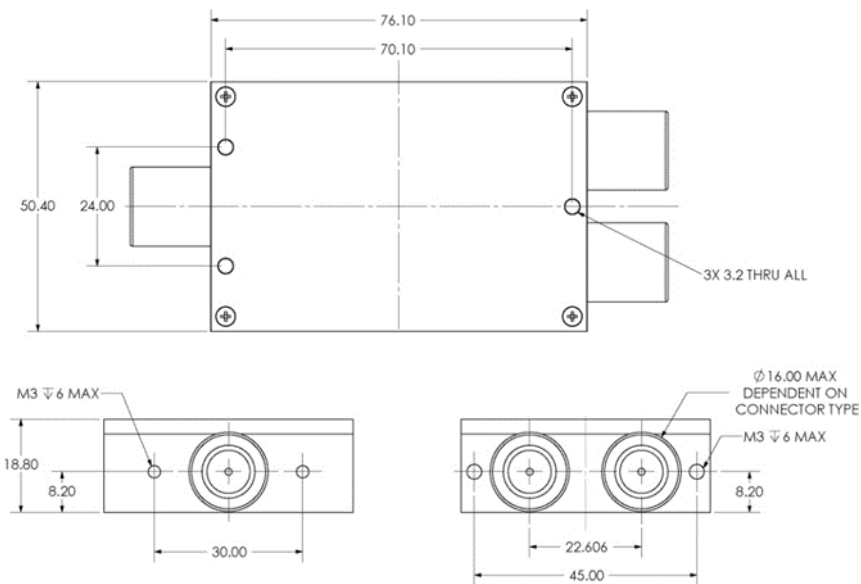


Environmental	
Operating Temperature	-40°C to +85°C
Storage Temperature	-55°C to +100°C
Location	Indoor use Only
Humidity	Max. 85% non-condensing
Altitude	Max. 10,000 feet

Max Operating Parameters	
Input RF Power into matched load with 20dB return loss	+27 dBm (500mW) as a splitter +18 dBm (62.5mW) as a combiner
DC Voltage	35V on any RF port
DC Current	N/A
DC Consumption	N/A

! Operation beyond these limits may cause instantaneous and permanent damage.

Physical Dimensions (mm)



Note: The specification is subject to regular reviews and will be updated from time to time as part of our continuing product development and improved specification accuracy.