

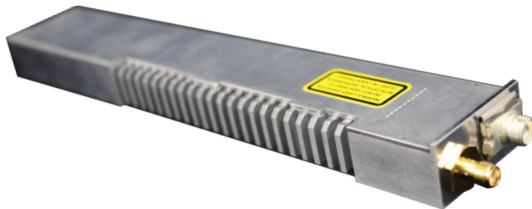


Genus Fibre Summary

The Genus StingRay RF over Fibre links are used as an alternative to copper coaxial cable. They convert high quality RF to optical signals over single mode fibre from, for example, a satellite antenna to reception equipment room, up to 10 km away, with options for distances up to 50 km.

The range is split in to 1U and 2U modules. The 1U modules are ideal for ultra-compact requirements or for smaller applications, such as a single antenna, with up to 16 RF modules housed in a 1U high chassis. The 2U modules offer twin module options, where 2 separate links are provided on one module or with a -20 dB monitoring port for input signal monitoring.

1U Modules



- L-Band (850-2450MHz)
- S-Band (500-3150MHz)
- Wide Band (50-3150MHz)
- 10MHz
- CWDM
- Ethernet over Fibre

Model Number	Module Type	Frequency
SRY-G1S-TS2-179-xxxx	TX (L-Band)	850-2450MHz
SRY-G1S-RS2-180-xxxx	RX (L-Band)	850-2450MHz
SRY-G1S-TS6-161-xxxx	TX (S-Band)	500-3150MHz
SRY-G1S-RS6-162-xxxx	RX (S-Band)	500-3150MHz
SRY-G1S-TB3-171-xxxx	TX (Wide Band)	50-3150MHz
SRY-G1S-RB3-172-xxxx	RX (Wide Band)	50-3150MHz
SRY-G1S-TY-163-xxxx	TX (10MHz)	10MHz
SRY-G1S-RY-164-xxxx	RX (10MHz)	10MHz
SRY-G1S-TXS6-173-xxxx	TX (CWDM)	500-3150MHz
SRY-G1S-RS6-174-xxxx	RX (CWDM)	500-3150MHz
SRY-G1S-OCM-08-YY-201-xx	MUX (CWDM)	N/A
SRY-G1S-OCD-08-YY-202-xx	DEMUX (CWDM)	N/A
SRY-G1S-DA-165	Ethernet	N/A

Note : The specification is subject to regular reviews and will be updated from time to time as part of our continuing product development and improved spec accuracy.



2U Modules



- L-Band (850-2450MHz)
- Dual L-Band (850-2450MHz)
- S-Band (500-3150MHz)
- Dual S-Band (500-3150MHz)
- Wide Band (50-3150MHz)
- 10MHz
- CWDM
- Ethernet over Fibre
- Timing Links (IRIG-B)
- 1+1 Configurations
- -20dB Monitor Ports

Model Number	Module Type	Frequency
SRY-G2S-TS2-327-xxxxxx	TX (L-Band) & Monitor Port	850-2450MHz
SRY-G2S-RS2-328-xxxxxx	RX (L-Band) & Monitor Port	850-2450MHz
SRY-G2S-TS2-331-xxxx	Dual TX (L-Band)	850-2450MHz
SRY-G2S-RS2-332-xxxx	Dual RX (L-Band)	850-2450MHz
SRY-G2S-TS6-311-xxxxxx	TX (S-Band) & Monitor Port	500-3150MHz
SRY-G2S-RS6-312-xxxxxx	RX (S-Band) & Monitor Port	500-3150MHz
SRY-G2S-TS6-313-xxxx	Dual TX (S-Band)	500-3150MHz
SRY-G2S-RS6-314-xxxx	Dual RX (S-Band)	500-3150MHz
SRY-G2S-TB3-317-xxxxxx	TX (Wide Band) & Monitor Port	50-3150MHz
SRY-G2S-RB3-318-xxxxxx	RX (Wide Band) & Monitor Port	50-3150MHz
SRY-G2S-TY-315-xxxxxx	TX (10MHz) & Monitor Port	10MHz
SRY-G2S-RY-316-xxxxxx	RX (10MHz) & Monitor Port	10MHz
SRY-G2S-TXS6-321-xxxxxx	TX (CWDM) & Monitor Port	500-3150MHz
SRY-G2S-RS6-322-xxxxxx	RX (CWDM) & Monitor Port	500-3150MHz
SRY-G2S-OCM-08-YY-203-xx	MUX (CWDM)	N/A
SRY-G2S-OCD-08-YY-204-xx	DEMUX (CWDM)	N/A
SRY-G2S-DA-320	Ethernet	N/A
SRY-G2S-TY-323-xxxxxx	Timing Links (IRIG-B)	1PPS to 1MPPS and IRIG DCLS
SRY-G2S-RY-324-xxxxxx	Timing Links (IRIG-B)	1PPS to 1MPPS and IRIG DCLS

