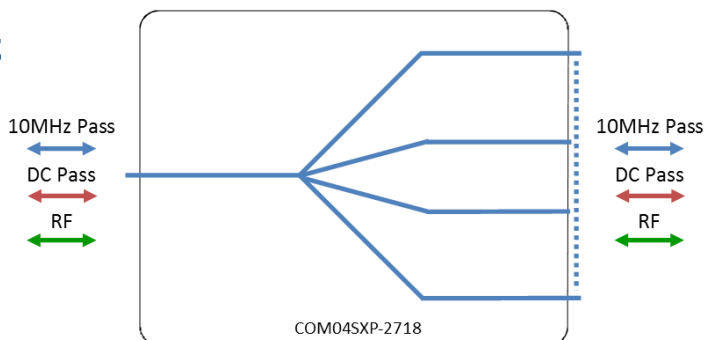




RF Components

4-Way ODU Passive S-Band Splitter/Combiner

700 - 2700 MHz

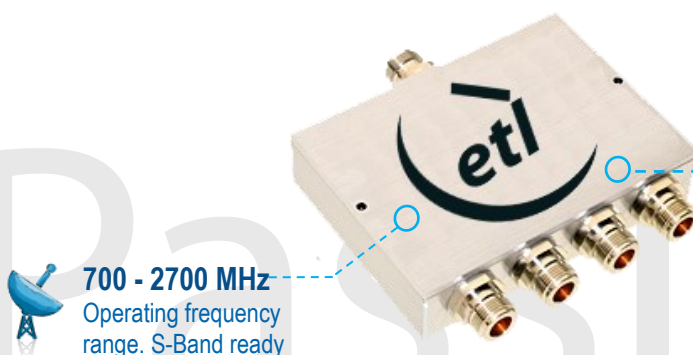


Model Number:
COM0SXP-2718

- IP 67 weatherproof suitable for outdoor use.
- All ports 10MHz & DC Pass

Available with RF connector options:

- 50 Ω SMA
- 50 Ω N-type



700 - 2700 MHz
Operating frequency range. S-Band ready



Compact
Housed in rugged compact enclosure

RF Parameters		
COM04SXP-2718-XXXX	S5S5	N5N5
Frequency Range	700 - 2700 MHz	
RF Connectors	50 Ω SMA	50 Ω N-Type
Mean Insertion Loss (dB)	0.5 \pm 0.3	0.5 \pm 0.3
Flatness \pm (dB)	0.5	0.5
Input Return Loss (dB)	Typ.	17
	Min	14
Output Return Loss (dB)	Typ.	22
	Min	16
Isolation (dB)	Typ.	22
Amplitude Balance (dB)	\leq 0.3	\leq 0.3
Phase Balance (Φ)	\leq 4 $^\circ$	\leq 4 $^\circ$
The given Insertion Loss specified is the loss above the theoretical limit for a lossless divider 10MHz Insertion Loss is up to 3dB above the theoretical loss* 10MHz Rejection is 20dB* *To ports which are applicable		

Broadcast



Marine Oil & Gas



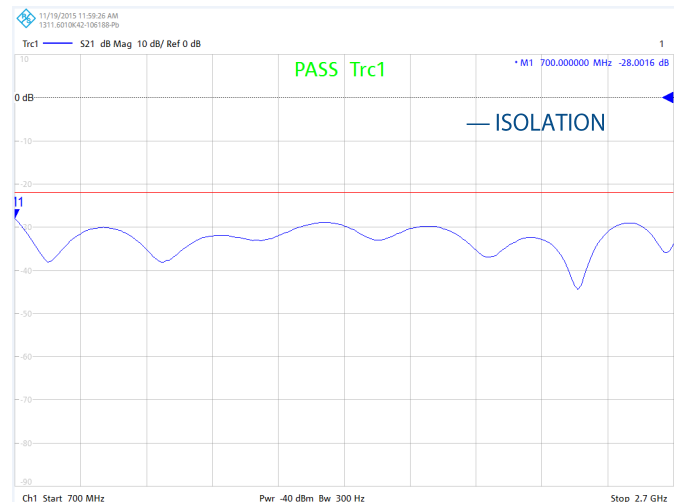
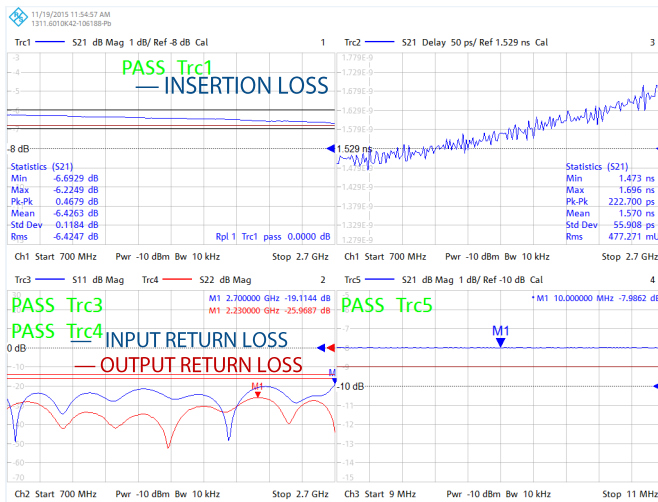
SNG & VSAT



Satellite Teleport



Technical specifications and operating parameters



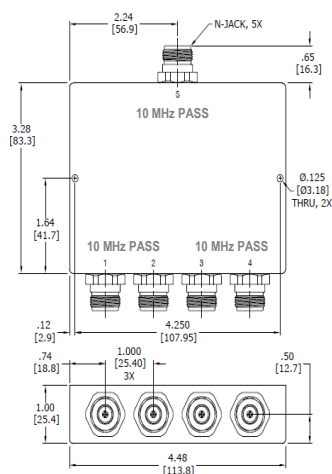
Environmental	
Operating Temperature	-65°C to +85°C
Storage Temperature	-65°C to +85°C
Location	Indoor or outdoor use
Altitude	Max 10,000 feet

Max Operating Parameters	
Input RF Power	40W(46dBm)
DC Voltage	N/A
DC Current	N/A
DC Consumption	N/A

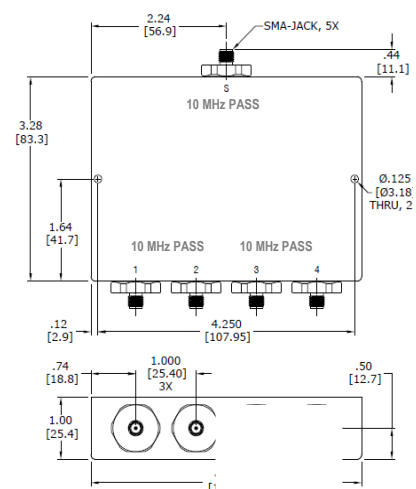
! Operation beyond these limits may cause instantaneous and permanent damage.

Physical Dimensions (mm)

50 Ohm N-Type



50 Ohm SMA



Note: The specification is subject to regular reviews and will be updated from time to time as part of our continuing product development and improved specification accuracy.