



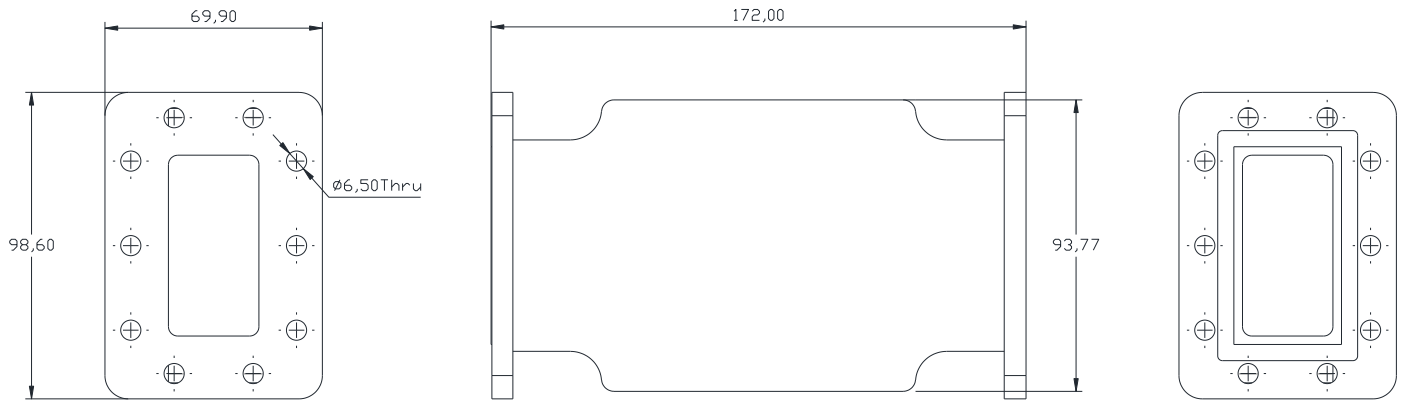
Model Number:  
**F-WGC1-714077**

RF Components

# C-Band Waveguide Filter

4000-4200MHz

Physical Dimensions ( $\pm 0.3\text{mm}$ )



# Filter

RF Parameters		
F-WGC1-714077		CFCG
Band Pass Frequencies		4000-4200 MHz
Rejection		$\geq 70$ @DC - 3900MHz, $\geq 60$ @3900 - 3980MHz $\geq 30$ @3980 - 3985MHz, $\geq 30$ @4230 - 4400MHz
Insertion Loss (dB)	Max	$\leq 1.4$
Return Loss (dB)	Min	20
Connectors		CPR229F/ CPR229G
Group Delay (ns $\pm 0.5$ MHz)		$\leq 5$ @4000 ~ 4010MHz $\leq 1.45$ @4010 ~ 4200MHz
Power Handling	Max	100W

Environmental	
Operating Temperature	-20 °C to +50°C
Location	For Indoor or Outdoor use
IP Rating	IP65

## Broadcast



## Marine Oil & Gas



## SNG & VSAT



## Satellite Teleport

