

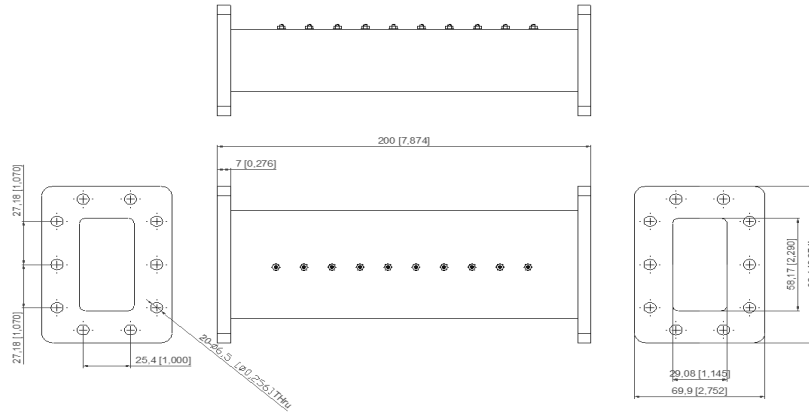


Model Number:
F-WGBPC1-7042

RF Components

C-Band Waveguide Filter

3.4 - 4.2 GHz



Filter

RF Parameters	
F-WGBPC1-7042	
Flanges	CPR229F
Frequency Range (MHz)	3400-4200
Insertion Loss (dB)	≤ 0.3
Return Loss (dB)	≥ 20
Rejection (dB)	≥ 60@DC-3000MHz ≥ 60@4500-4900MHz ≥ 90@4900-10500MHz
Power (W)	100
Temperature	-30~+65°C
Waveguide Size	WG11A / WR229 / R40

Broadcast



Marine Oil & Gas



SNG & VSAT



Satellite Teleport

