



Model Number:  
**COM04L1A-2282**

RF Components

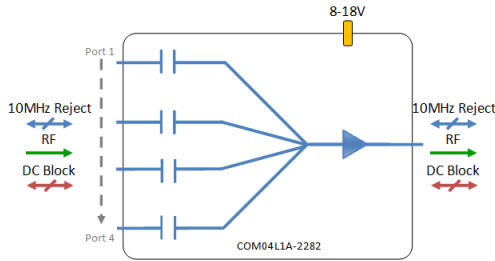
# 4-Way L-Band Active Combiner

850 - 2150 MHz

- Unity gain
- Flat frequency response
- All ports DC & 10 MHz blocked
- Requires 8-18V external DC bias

Available with RF connector options:

- 50 Ω SMA
- 50 Ω N-type
- 50 Ω BNC
- 75 Ω BNC
- 75 Ω F-type



### Compact

Housed in rugged compact enclosure

### Flexible Mounting

Tapped screw & through hole mounting options

**8-18V**  
External DC powering

**850-2150 MHz**  
Operating frequency range.



RF Parameters						
COM04L1A-2282	S5S5	N5N5	B5B5	B7B7	F7F7	
Frequency Range	MHz					
RF Connectors	50Ω SMA	50Ω N-Type	50Ω BNC	75Ω BNC	75Ω F-Type	
Mean Gain (dB)	0±1.0	0±1.0	0±1.2	0±1.5	0±1.5	
Flatness ± (dB)	±0.5	±0.5	±0.8	±1.2	±1.2	
Input Return Loss (dB)	Typ.	18	18	15	12	12
	Min	12	12	10	8	8
Output Return Loss (dB)	Typ.	16	15	15	12	12
	Min	12	12	10	8	8
Output P1dB GCP** (dBm)	Typ.	18	18	18	18	18
	Min	15	15	15	15	15
Isolation (dB)	Typ.	20	20	20	20	20
Output IP3 (dBm)	Typ.	+28dBm	+28dBm	+28dBm	+28dBm	+28dBm
Noise Figure (dB)	Typ.	15	15	15	15	15
10MHz Rejection is 20dB* *To ports which are applicable **GCP (Gain Compression Point)						

### Broadcast



### Marine Oil & Gas



### SNG & VSAT



### Satellite Teleport





RF Components

Model Number:  
**COM04L1A-2282**  
4-Way L-Band Active Combiner

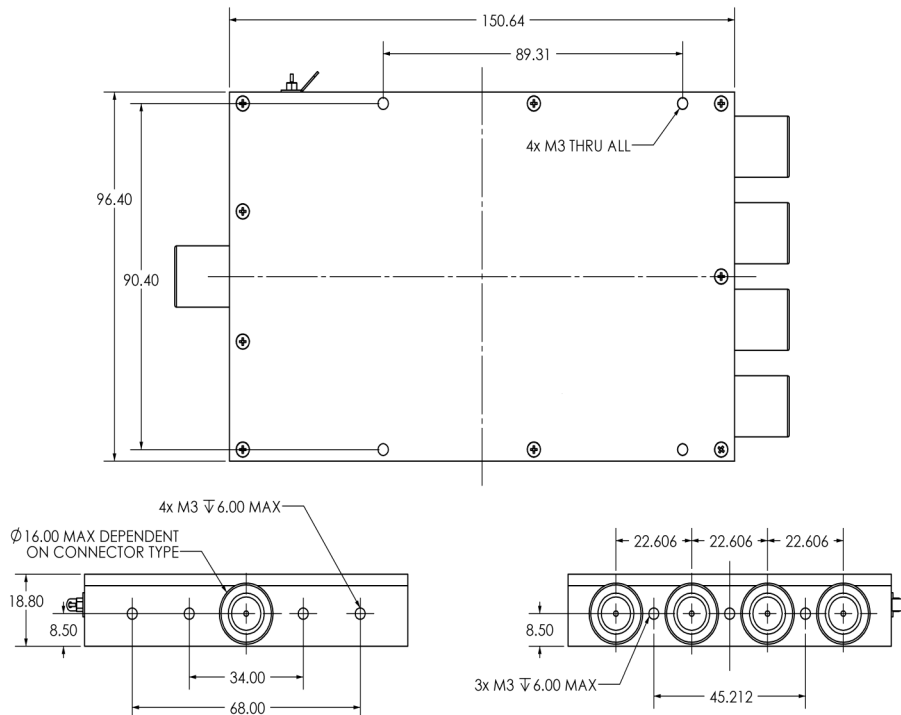
### Technical specifications and operating parameters

Environmental		
Operating Temperature		0°C to +45°C
Storage Temperature		-20°C to +75°C
Location		Indoor use Only
Humidity	Max	85% non-condensing
Altitude	Max	10,000 feet

Max Operating Parameters		
Input RF Power		+21 dBm (125 mW)
DC Voltage		35V on any RF port
DC Current	Max	n/a
DC Consumption		100mA Max, 80mA typical

**!** Operation beyond these limits may cause instantaneous and permanent damage.

### Physical Dimensions (mm)



Note: The specification is subject to regular reviews and will be updated from time to time as part of our continuing product development and improved specification accuracy.

ETL SYSTEMS LIMITED  
Coldwell Radio Station  
Madley  
Hereford  
England HR2 9NE

TELEPHONE  
+44 (0)1981 259020  
  
EMAIL  
info@etlsystems.com

FACSIMILE  
+44 (0)1981 259021  
  
WEB  
www.etlsystems.com

