

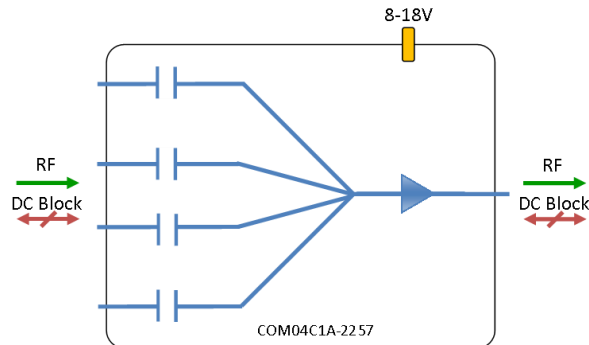


RF Components

Model Number:
COM04C1A-2257

4-Way C-Band Active Combiner

3400 - 4200 MHz



- Unity gain
- All ports DC blocked

Available with RF connector options:

- 50 Ω SMA
- 50 Ω N-type

Compact



Housed in rugged compact enclosure

Flexible Mounting



Tapped screw & through hole mounting options

8-18V

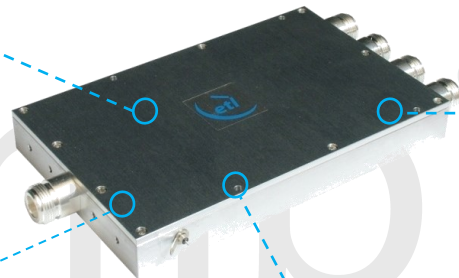


External DC powering

3400 - 4200 MHz



Operating frequency range. L-Band ready



RF Parameters		
COM04C1A-2257-XXXX	S5S5	N5N5
Frequency Range	3400 - 4200 MHz	
RF Connectors	50 Ω SMA	50 Ω N-Type
Mean Gain (dB)	0 ± 2	0 ± 2
Flatness \pm (dB)	± 1	± 1
Input Return Loss (dB)	Typ.	16
	Min	10
Output Return Loss (dB)	Typ.	16
	Min	10
Output P1dB GCP** (dBm)	Typ.	2
	Min	0
Isolation (dB)	Typ.	16
Output IP3(dBm)	12	12
Noise Figure (dB)	15	15
10MHz Rejection is 20dB*		
*To ports which are applicable		
**GCP (Gain Compression Point)		

Broadcast



Marine Oil & Gas



SNG & VSAT



Satellite Teleport

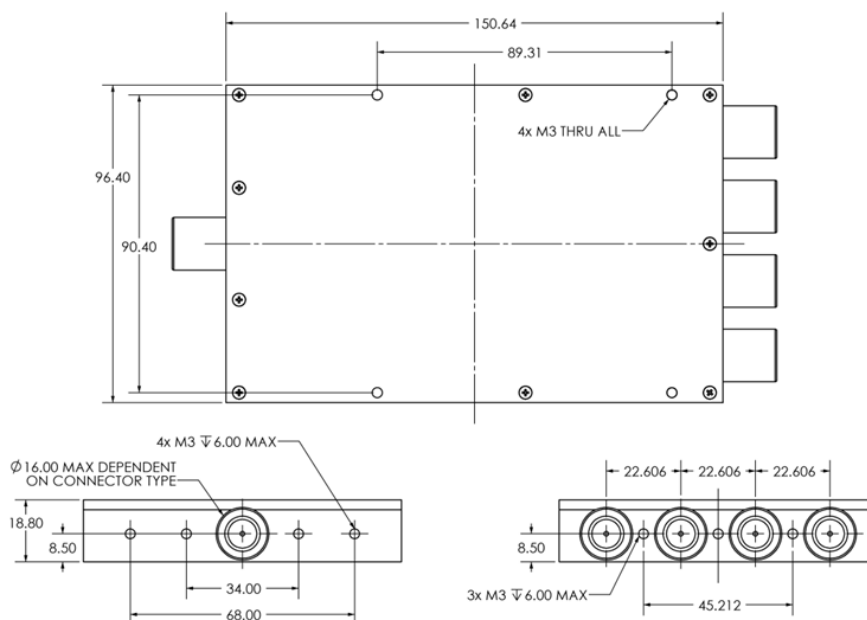


Environmental		
Operating Temperature		0°C to +45°C
Storage Temperature		-20°C to +75°C
Location		Indoor use Only
Humidity	Max	85% non-condensing
Altitude	Max	10,000 feet

Max Operating Parameters	
Input RF Power	+21 dBm (125mW)
DC Voltage	35V on any RF port
DC Consumption	100mA max, 80mA typ

! Operation beyond these limits may cause instantaneous and permanent damage.

Physical Dimensions (mm)



Note: The specification is subject to regular reviews and will be updated from time to time as part of our continuing product development and improved specification accuracy.