



Model Number: C0401S1UC3A-N5N5

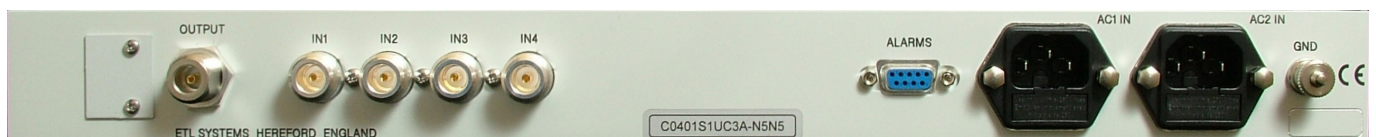
4-way Single C-band Active Combiner



This single 4-way active C-band combiner operates over a frequency range of 5.85-6.725 GHz and is housed in a 1U high shelf. This unit is designed where all items must be rack mountable.

Front View of Model C0401S1UC3A-N5N5

This unit benefits from dual redundant power supplies for reliability in service, which can be monitored via front panel LEDs and via a dry contact alarm port on the rear panel.



Rear View of Model C0401S1UC3A-N5N5

This particular unit is supplied with 50 ohm N-type connectors, but is available in a variety of impedances and connector types (model numbers will vary).





Model Number: C0401S1UC3A-N5N5

4-way Single C-band Active Combiner

RF Engineering
and Custom Build

Technical specifications and operating parameters

RF Parameters		
Capacity	4- way	
Frequency Range	5.85-6.725 GHz (C-band)	
Gain	0 ± 1 dB nominal mean across band	
Flatness	5.85-6.725 GHz	± 1.5 dB typical
1dB Compression	+5 dBm	
Noise Figure	14 dB typical	
Input Return Loss	10 dB typical	
Output Return Loss	15 dB typical	

System Control	
Display	Front Panel LED's for LNB Power & PSU status
Alarms	Dry contact alarm port on rear panel for PSU failure

Environmental	
Operating temperature	0 to 45°C
Location	Indoor use only
Storage temperature	-20°C to +75°C
Humidity	85% non-condensing

Physical	
Input Connector	N-type
Input Impedance	50Ω
Output Connector	N-type
Output Impedance	50Ω
Dimensions	1U high x 350mm deep x 19" wide
Weight	6 kg
Colour	White 00-E-55 semi-gloss (Front panel)

Power	
AC Power	85-264V AC (50/60Hz), Fused 2A
LNB Power	None
PSU	Dual Redundant
Hot-swap PSU	None

Key Features	
Housed in a compact 1U high rack	
Dual redundant power supplies	
Front Panel LED's for power & PSU status	
Dry contact alarm port on rear panel for PSU failure	

ETL SYSTEMS LIMITED
Coldwell Radio Station
Madley
Hereford
England HR2 9NE

TELEPHONE
+44 (0)1981 259020
EMAIL
info@etlsystems.com

FACSIMILE
+44 (0)1981 259021
WEB
www.etlsystems.com

