

RF ACTIVE SPLITTERS & COMBINERS

Frequency ranges from DC to 8 GHz

ETL Systems provides a versatile range of active splitters and combiners, supporting frequencies from L-band, IF, S-band, C-band, KU-band, and Wideband. Available in configurations from 2-way to 16-way, they come with 50Ω or 75Ω impedance and various connector types.

ETL's active splitters and combiners feature integrated voltage regulators, ensuring protection against supply rail fluctuations for reliable performance. They are powered via external or inline DC bias, with a typical input voltage range of 8–18V, depending on the product. Additionally, these components offer the flexibility to pass or block a 10 MHz signal or DC voltage, enabling seamless power delivery to interconnected components or frequency reference transmission to devices like LNBS or BUCs.

Benefits & Applications

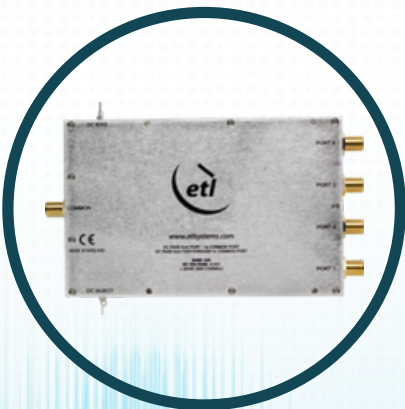
- Ability to pass/block 10MHz and/or DC.
- External or in-line DC bias.
- High linearity.
- Very low amplitude unbalance.
- Stable performance over temperature.
- Indoor (IDU) & Outdoor (ODU) housing.



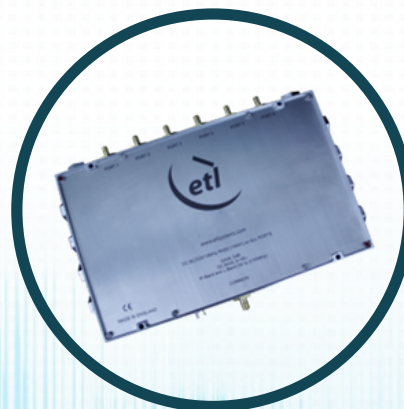
2-Way



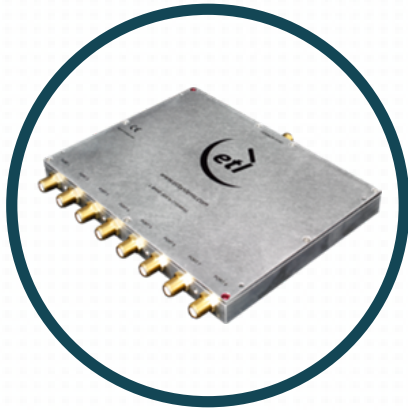
3-Way



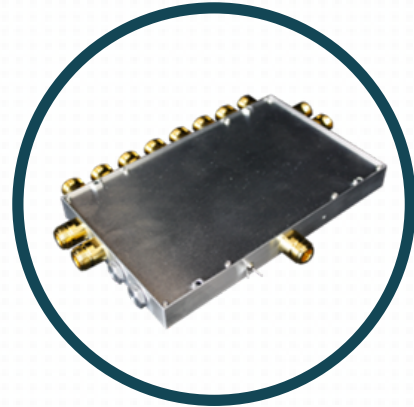
4-Way



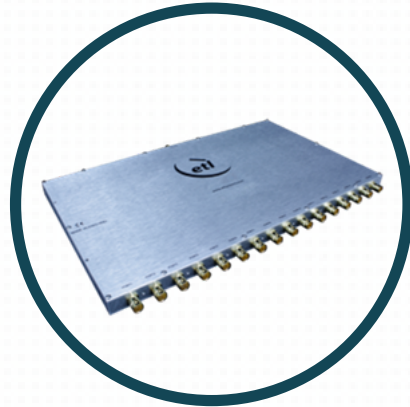
6-Way



8-Way



12-Way



16-Way

2-Way Active Splitters & Combiners Product List

Model Number	RF Connectors	Frequency Range	Type	Input Power Rating	Features
DIV02L1A-2301	S5, N5, B5, B7, F7	850 - 2150 Mhz	Splitter	+21 dBm (125mW)	DC and 10 MHz blocked
DIV02L1A-2340	N5, B5, B7, F7	850 - 2150 Mhz	Splitter	+21 dBm (125mW)	DC inject out through common port only
DIV02L1A-2372	S5, N5, B7, F7	850 - 2150 Mhz	Splitter	+16 dBm (40mW)	1 port DC block, 1 port DC pass
DIV02L1A-2369	S5, N5, B5, B7, F7	850 - 2150 Mhz	Splitter	+21 dBm (125mW)	1 port DC & 10MHz block, 1 port DC & 10MHz pass
DIV02L1A-2390	S5, N5, B5, B7	850 - 2150 Mhz	Splitter	+16 dBm (40mW)	All ports DC blocked
DIV02F1A-2401	N5, B5	50 - 2800 Mhz	Splitter	+21 dBm (125mW)	All ports are DC blocked and pass 10MHz
DIV02B2A-2402	S5, N5, B5, B7, F7	50 - 2150 Mhz	Splitter	+21 dBm (125mW)	All ports are DC blocked and pass 10MHz
DIV02L1A-2420	S5, N5, B5, F7	850 - 2150 Mhz	Splitter	+21 dBm (125mW)	DC pass between port-1 and the common port. All other ports are DC and 10MHz blocked, port-1 is also 10MHz block
DIV02L1A-2423	B5, B7, F7	850 - 2150 Mhz	Splitter	+18 dBm (63mW)	Common and port-1 are DC pass, port-2 is DC blocked
DIV02L1A-2425	S5, N5	850 - 2150 Mhz	Splitter	+16 dBm (40mW)	DC is blocked, inline bias on common port
DIV02L1A-2374	N5	850 - 2150 Mhz	Splitter	+16 dBm (40mW)	1 port DC block, 1 port DC pass
DIV02L1A-2432	S5, N5, B5	850 - 2150 Mhz	Splitter	+16 dBm (40mW)	DC block and 10MHz pass on all ports
COM02L1A-2271	S5, N5, B7, F7	850 - 2150 Mhz	Combiner	+21 dBm (125mW)	All ports 10 MHz & DC pass
COM02L1A-2254	S5, N5, B5, F7	850 - 2150 Mhz	Combiner	+20 dBm (100mW)	Common and port-1 10 MHz & DC pass, all other ports 10MHz & DC blocked.
COM02L1A-2201	S5, N5, B5, B7, F7	850 - 2150 Mhz	Combiner	+16 dBm (40mW)	All ports DC blocked
COM02F1A-2101	S5, N5, B5	50 - 2800 Mhz	Combiner	+24 dBm (250mW)	All ports are DC blocked and pass 10MHz
COM02L1A-2202	S5, N5	850 - 2150 Mhz	Combiner	+24 dBm (250mW)	All ports DC blocked
COM02B2A-2102	S5, N5, B5, B7, F7	50 - 2150 Mhz	Combiner	+24 dBm (250mW)	All ports are DC blocked and pass 10MHz



3-Way Active Splitters & Combiners Product List

Model Number	RF Connectors	Frequency Range	Type	Input Power Rating	Features
DIV03F1A-2403	N5, B5	50 - 2800 Mhz	Splitter	+21 dBm (125mW)	All ports DC blocked and pass 10MHz
COM03F1A-2103	N5, B5	50 - 2800 Mhz	Combiner	+16 dBm (40mW)	All ports DC blocked and pass 10MHz

4-Way Active Splitters Product List

Model Number	RF Connectors	Frequency Range	Type	Input Power Rating	Features
DIV04L1A-2304	S5, N5, B5, B7, F7	850 - 2150 Mhz	Splitter	+16 dBm (40mW)	All ports DC blocked
DIV04S2A-2314	S5, N5, B5, B7, F7	850 - 2500 Mhz	Splitter	+16 dBm (40mW)	All ports DC blocked
DIV04L1A-2322	S5, N5, B7, F7	850 - 2150 Mhz	Splitter	+21 dBm (125mW)	All ports DC blocked
DIV04L1A-2343	S5, N5, B5	850 - 2150 Mhz	Splitter	+16 dBm (40mW)	All ports DC blocked. Requires 8 to 24V which also provides DC for LNB bias on the common port.
DIV04L1A-2346	S5, N5, B5, B7, F7	850 - 2150 Mhz	Splitter	+16 dBm (40mW)	2 ports DC blocked, 2 are DC pass to the common port
DIV04L1A-2351	S5, N5, B5, B7, F7	850 - 2150 Mhz	Splitter	+16 dBm (40mW)	All ports DC blocked. Outer two RF ports 10MHz pass to the common port, inner two are 10MHz blocked
DIV04L1A-2370	S5, N5, B5, B7, F7	850 - 2150 Mhz	Splitter	+16 dBm (40mW)	DC & 10MHz pass from port-1 to common port. All other ports DC & 10MHz blocked
DIVC1A-2380	S5	3400 - 4200 MHz	Splitter	+16 dBm (40mW)	All ports DC blocked
DIV04L1A-2383	B7, F7	850 - 2150 Mhz	Splitter	+21 dBm (125mW)	DC is blocked from passing between output ports.
DIV04L1A-2385	S5, N5, B7, F7	850 - 2150 Mhz	Splitter	+16 dBm (40mW)	DC & 10MHz pass from port-1 to common port. All other ports DC & 10MHz blocked
DIV04F1A-2405	S5, N5, B5	50 - 3150 MHz	Splitter	+21 dBm (125mW)	All ports DC blocked and pass 10MHz
DIV04B2A-2406	S5, N5, B5, B7, F7	50 - 2150 MHz	Splitter	+25 dBm (316mW)	All ports DC blocked and pass 10MHz
DIV04L1A-2400	S5, N5, B5, B7, F7	850 - 2150 MHz	Splitter	+21 dBm (125mW)	All ports DC & 10MHz pass
DIV04FSA-2426	S5, B5, B7, F7	10 - 200 MHz	Splitter	+21 dBm (125mW)	All ports DC blocked
DIV04L1A-2436	S5, N5, B5, B7, F7	850 - 2150 MHz	Splitter	+16 dBm (40mW)	DC pass from output to common port. DC blocked between output ports
DIV04L1A-2440	S5, N5, B5, B7, F7	850 - 2150 MHz	Splitter	+21 dBm (125mW)	Common port to port-1 is DC linked with 10MHz pass. All other ports DC & 10MHz blocked
DIV04L1A-2442	S5, N5, B5, F7	850 - 2150 MHz	Splitter	+16 dBm (40mW)	DC pass from Port 1 to common port, all other ports DC blocked. With LNB inject line offering DC inject from external or inline power
DIV04L1A-2444	N5, B7, F7	850 - 2150 MHz	Splitter	+16 dBm (40mW)	Common port to port-1 is DC & 10MHz pass. All other ports DC & 10MHz blocked
DIV04S2A-2314	S5, N5, B5, B7, F7	850 - 2150 MHz	Splitter	+16 dBm (40mW)	All ports DC blocked



4-Way Active Combiners Product List					
Model Number	RF Connectors	Frequency Range	Type	Input Power Rating	Features
COM04L1A-2275	N5, F7	850 - 2150 MHz	Combiner	+21 dBm (125mW)	DC and 10MHz pass between port-1 and the common port
COM04L1A-2270	S5, N5, B5, F7	850 - 2150 MHz	Combiner	+21 dBm (125mW)	All ports DC & 10 MHz pass
COM04L1A-2252	S5, N5, B5, B7, F7	850 - 2150 MHz	Combiner	+21 dBm (125mW)	10 MHz & DC pass between port-1 and common port. All other ports DC & 10Mz blocked
COM04L1A-2274	S5, N5, F7	850 - 2150 MHz	Combiner	16 dBm (40mW)	
COM04L1A-2255	S5, N5, B5, F7	850 - 2150 MHz	Combiner	+23 dBm (200mW)	
COM04S2A-2264	S5	850 - 2500 MHz	Combiner	+21 dBm (125mW)	All ports DC blocked
COM04F1A-2105	S5, N5, B5	50 - 2800 MHz	Combiner	+27 dBm (500mW)	All ports DC blocked and pass 10MHz
COM04L1A-2204	S5, N5, B5, B7, F7	850 - 2150 MHz	Combiner	+24 dBm (125mW)	All ports DC blocked
COM04B2A-2106	S5, N5, B5, F7	50 - 2150 MHz	Combiner	+27 dBm (500mW)	All ports DC blocked and pass 10MHz

8-Way Active Splitters & Combiners Product List					
Model Number	RF Connectors	Frequency Range	Type	Input Power Rating	Features
DIV08L1A-2308	S5, N5, B5, B7, F7	850 - 2150 MHz	Splitter	+16 dBm (40mW)	All ports DC blocked
DIV08L1A-2320	S5, N5, B7	850 - 2150 MHz	Splitter	+16 dBm (40mW)	Port-1 to common DC & 10MHz pass, all others DC and 10MHz blocked
DIV08F6A-2333	S5, B5, B7	10 - 1000 MHz	Splitter	+16 dBm (40mW)	All ports DC blocked
DIV08L1A-2334	S5, N5, B5, F7	850 - 2150 MHz	Splitter	+16 dBm (40mW)	Port-1 to common DC & 10MHz pass, all others DC blocked
DIV08F3A-2335	B5	20 - 200 MHz	Splitter	+16 dBm (40mW)	10MHz pass and DC block on all ports
DIV08S2A-2416	S5, N5, B5	850 - 2500 MHz	Splitter	+21 dBm (125mW)	All ports DC blocked
DIV08L1A-2376	S5, N5, B5, B7, F7	850 - 2150 MHz	Splitter	+16 dBm (40mW)	DC pass from any output to common port, blocked passing between outputs. Port-1 to common 10MHz pass
DIV08C1A-2377	S5, N5	3400 - 4200 MHz	Splitter	+16 dBm (40mW)	All ports DC & 10 MHz blocked
DIV08F1A-2409	S5, N5, B5	50 - 2800 MHz	Splitter	+20 dBm (100mW)	10MHz pass, all ports DC blocked
DIV08L1A-2395	N5, B7, F7	850 - 2150 MHz	Splitter	+16 dBm (40mW)	12-24V can be injected to provide LNB bias. All other RF ports are DC blocked
DIV08L1A-2397	N5, F7	850 - 2150 MHz	Splitter	+20 dBm (100mW)	12-24V can be injected to provide LNB bias. All other RF ports are DC blocked
DIV08L1A-2398	S5, F7	850 - 2150 MHz	Splitter	+16 dBm (40mW)	10MHz and DC pass common port to port-1, all other ports DC & 10MHz blocked. Separate DC inject port to facilitate LNB bias
DIV08L1A-2419	S5, N5, B7	850 - 2150 MHz	Splitter	+21 dBm (125mW)	All ports DC & 10 MHz blocked
DIV08L1A-2443	S5, N5, B5, B7, F7	850 - 2150 MHz	Splitter	+16 dBm (40mW)	Port-1 to common port DC pass, all other ports DC blocked. Also has LNB inject line offering DC inject from external or inline power.
DIV08L1A-2448	F7	850 - 2150 MHz	Splitter	+16 dBm (40mW)	DC pass from output ports to common port. DC blocked between output ports.
DIV08L1A-2460	F7	850 - 2150 MHz	Splitter	+20 dBm (100mW)	All ports DC blocked.

Note 1: The specification is subject to regular reviews and will be updated from time to time as part of our continuing product development and improved spec accuracy.

Note 2: Operation beyond the quoted limits stated above may cause instantaneous and permanent damage.



8-Way Active Combiners Product List

Model Number	RF Connectors	Frequency Range	Type	Input Power Rating	Features
COM08L1A-2235	S5, N5, B5, B7, F7	850 - 2150 MHz	Combiner	+21 dBm (125mW)	DC pass from inputs to the output port, DC blocked between the input ports. 10MHz pass is bidirectional.
COM08L1A-2246	S5, N5, B7, F7	850 - 2150 MHz	Combiner	+24 dBm (240mW)	10MHz & DC pass port-1 to common port, 10MHz & DC block on all other output ports. LNB injection on the common port.
COM08L1A-2245	S5, N5, B5, B7, F7	850 - 2150 MHz	Combiner	+24 dBm (240mW)	Port-1 to common is 10MHz pass and DC blocked, all other ports DC and 10MHz blocked.
COM08L1A-2247	S5, N5, B5, B7, F7	850 - 2150 MHz	Combiner	+21 dBm (125mW)	10 MHz & DC pass between port-1 and the common port. All other ports 10MHz & DC blocked
COM08L1A-2266	S5, N5, B5, B7, F7	850 - 2150 MHz	Combiner	+21 dBm (125mW)	All ports DC & 10 MHz blocked
COM08L1A-2236	S5, N5, B5, B7, F7	850 - 2150 MHz	Combiner	+24 dBm (240mW)	DC pass port-1 to common, all other ports DC blocked. All ports 10MHz pass
COM08L1A-2208	S5, N5, B5, B7, F7	850 - 2150 MHz	Combiner	+21 dBm (125mW)	All ports DC blocked

12-Way Active Splitters & Combiners Product List

Model Number	RF Connectors	Frequency Range	Type	Input Power Rating	Features
DIV12F5A-2450	B5	10 MHz	Splitter	+13 dBm (19mW)	All ports DC blocked

16-Way Active Splitters & Combiners Product List

Model Number	RF Connectors	Frequency Range	Type	Input Power Rating	Features
DIV16F3A-2361	S5, N5, B5	20 - 200 MHz	Splitter	+18 dBm (63mW)	All ports DC blocked
COM16L1A-2273	S5, N5, B5, B7, F7	850 - 2150 MHz	Combiner	+20 dBm (100mW)	DC and 10 MHz pass on port-1 to common port, DC and 10MHz block on all other ports
COM16L1A-2227	S5, N5, B5, B7	850 - 2150 MHz	Combiner	+24 dBm (240mW)	DC and 10MHz pass on port-1, all other ports 10MHz pass and DC block
COM16L1A-2223	N5, F7	850 - 2150 MHz	Combiner	+24 dBm (240mW)	All ports DC blocked
COM16F3A-2241	S5, N5, B5, F7	20 -200 MHz	Combiner	+24 dBm (240mW)	All ports DC blocked

Note 1: The specification is subject to regular reviews and will be updated from time to time as part of our continuing product development and improved spec accuracy.

Note 2: Operation beyond the quoted limits stated above may cause instantaneous and permanent damage.