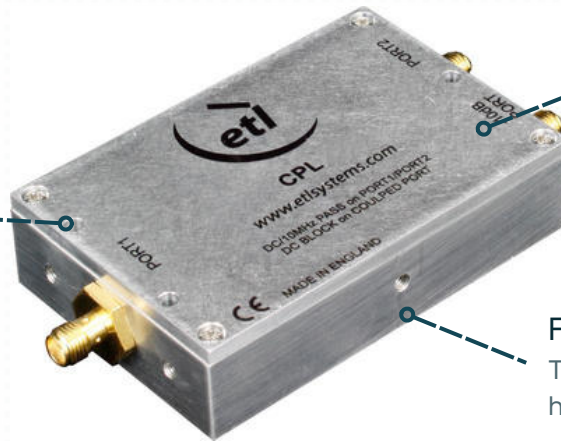


10dB L-band Proximity Coupler

850 MHz to 2150 MHz

850-2150 MHz
Operating frequency range



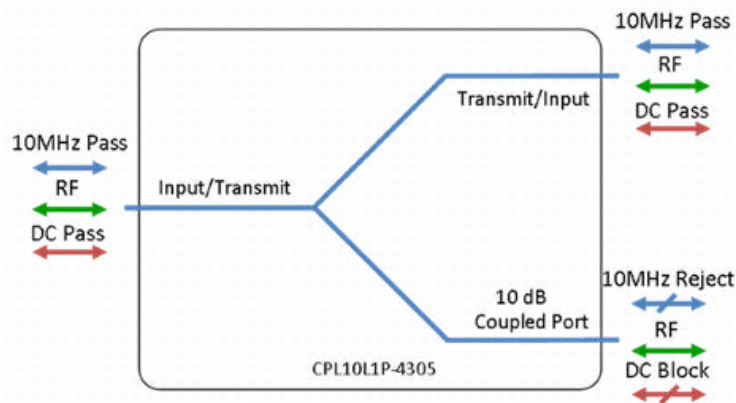
Compact
Housed in rugged compact enclosure

Flexible mounting
Tapped screw and through-hole mounting options

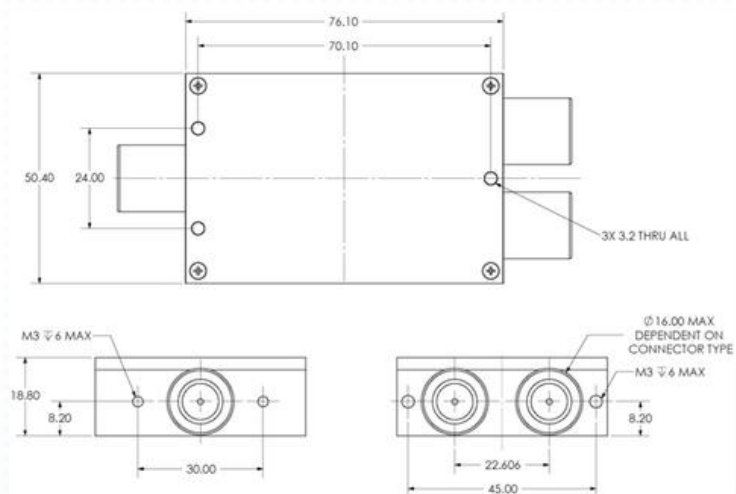
RF Parameters			
Model Variation		S5S5S5	F7F7F7
Frequency Range		850 - 2150 MHz	
RF Connectors		50Ω SMA	75Ω F-Type
Through Path			
Mean Insertion Loss		1.8 dB ± 0.2 dB	1.9 dB ± 0.4 dB
Flatness		±0.2 dB	±0.4 dB
Input Return Loss	Typ.	15 dB	14 dB
	Min.	13 dB	12 dB
Output Return Loss	Typ.	14 dB	
	Min.	11 dB	
Coupled Port			
Coupling Factor		10 ± 0.5 typ.	10 ± 1.0 typ.
Flatness		±0.2 dB typ.	±0.4 dB typ.
Return Loss	Typ.	14 dB typ.	
	Min.	11 dB min.	

Max. Operating Parameters	
Input RF Power	37 dBm (5 W)
DC Voltage	50V on any RF port
DC Consumption	5A max for 50 ohm units 3A max for 75 ohm units
Environmental	
Operating Temperature	0°C to +45°C
Storage Temperature	-20°C to +75°C
Location	Indoor use only
Humidity	85% non-condensing
Altitude	10,000 feet AMSL

Diagram



Physical Dimensions (mm)



Note 1: The specification is subject to regular reviews and will be updated from time to time as part of our continuing product development and improved spec accuracy.

Note 2: Operation beyond the quoted limits stated above may cause instantaneous and permanent damage.

Note 3: The given Insertion Loss specified is the loss above the theoretical limit for a lossless divider. 10MHz Insertion Loss is up to 3dB above the theoretical loss and 10MHz Rejection is 20dB to ports which are applicable.