

# 10dB IF-band Proximity Coupler

50-200MHz

50-200 MHz  
Operating frequency range



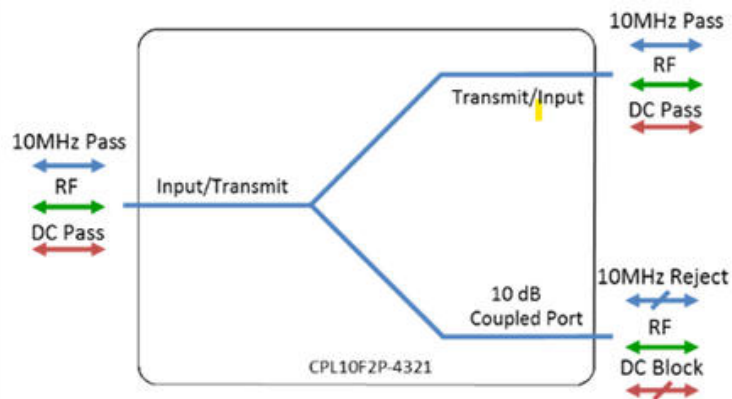
**Compact**  
Housed in rugged compact enclosure

**Flexible mounting**  
Tapped screw and through-hole mounting options

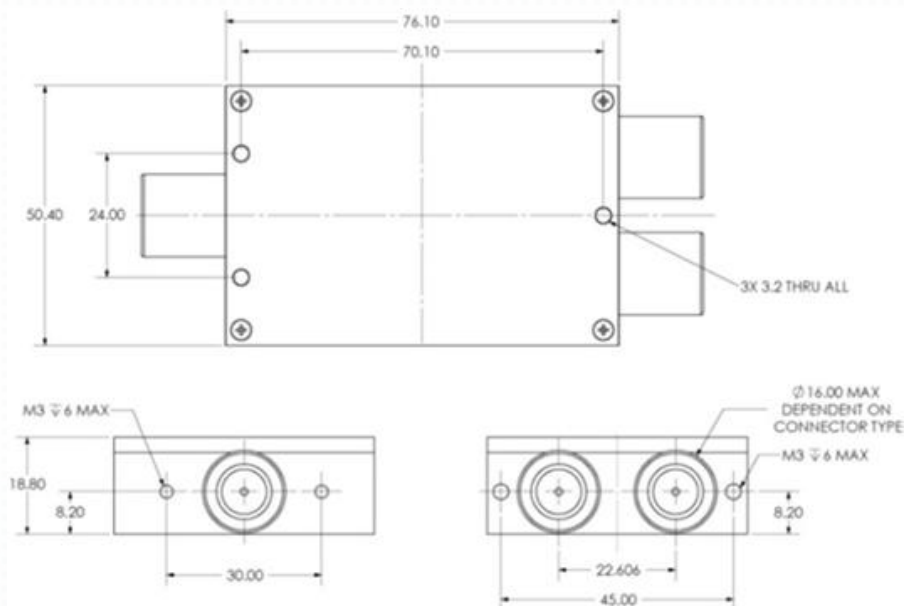
RF Parameters					
Model Variation		N5N5	B5B5	B7B7	
Frequency Range		50 - 200 MHz			
RF Connectors		50Ω N-Type	50Ω BNC	75Ω BNC	
Through Path					
Mean Insertion Loss		1.6 dB ± 0.2 dB	1.8 dB ± 0.3 dB	1.8 dB ± 0.3 dB	
Flatness		0.2 dB	0.4 dB	1.0 dB	
Input Return Loss	Typ.	18 dB	16 dB	12 dB	
	Min.	14 dB	12 dB	8 dB	
Output Return Loss	Typ.	18 dB	16 dB	12 dB	
	Min.	14 dB	12 dB	8 dB	
Coupled Port					
Coupling Factor		10.± 0.5 typ.	10 ± 0.8 typ.	10 ± 1.0 typ.	
Flatness		0.2 dB typ.	0.3 dB typ.	0.4 dB typ.	
Return Loss		10 dB typ.			

Operating Parameters	
Input RF Power	16 dBm (40 mW)
DC Voltage	35V on any RF port
Environmental	
Operating Temperature	0°C to +45°C
Storage Temperature	-20°C to +75°C
Location	Indoor use only
Humidity	85% non-condensing
Altitude	10,000 feet AMSL

## Diagram



## Physical Dimensions (mm)



10MHz Insertion Loss is up to 3dB above the theoretical loss\*

10MHz Rejection is 20dB\*

\*To ports which are applicable

Note 1: The specification is subject to regular reviews and will be updated from time to time as part of our continuing product development and improved spec accuracy.

Note 2: Operation beyond the quoted limits stated above may cause instantaneous and permanent damage.