

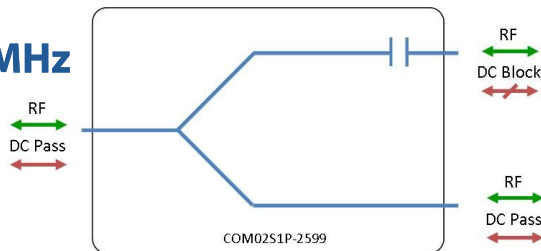


RF Components

Model Number:  
**COM02S1P-2599**

## 2-Way S-Band Passive Splitter/Combiner

**500 - 2750 MHz**



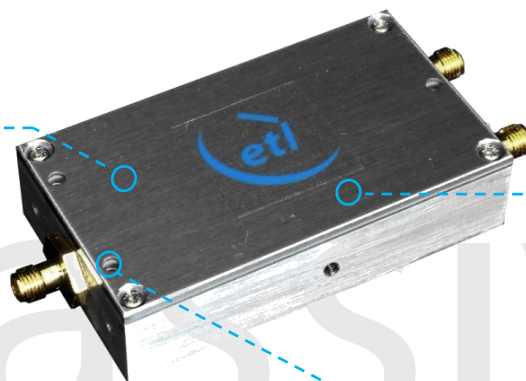
- One port DC blocked
- One port DC pass

Available with RF connector options:

- 50  $\Omega$  SMA
- 50  $\Omega$  N-type
- 50  $\Omega$  BNC



**500 - 2750 MHz**  
Operating frequency  
range. S-Band ready



### Compact

Housed in  
rugged compact  
enclosure



### Flexible Mounting

Tapped screw &  
through hole  
mounting options

RF Parameters				
COM02S1P-2599-XXXX		S5S5	N5N5	B5B5
Frequency Range		500-2750 MHz		
RF Connectors		50 $\Omega$ SMA	50 $\Omega$ N-Type	50 $\Omega$ BNC
Mean Insertion Loss (dB)		0.5 $\pm$ 0.3	0.5 $\pm$ 0.3	0.5 $\pm$ 0.3
Flatness $\pm$ (dB)		0.55	0.55	0.55
Input Return Loss (dB)	Typ.	16	16	16
	Min	12	12	12
Output Return Loss (dB)	Typ.	18	18	18
	Min	12	12	12
Isolation (dB)	Typ.	12	12	12
Amplitude Balance (dB)		$\leq$ 2	$\leq$ 2	$\leq$ 2
Phase Balance ( $\Phi$ )		$\leq$ 0.2 $^\circ$	$\leq$ 0.2 $^\circ$	$\leq$ 0.2 $^\circ$
The given Insertion Loss specified is the loss above the theoretical limit for a lossless divider				

### Broadcast



### Marine Oil & Gas



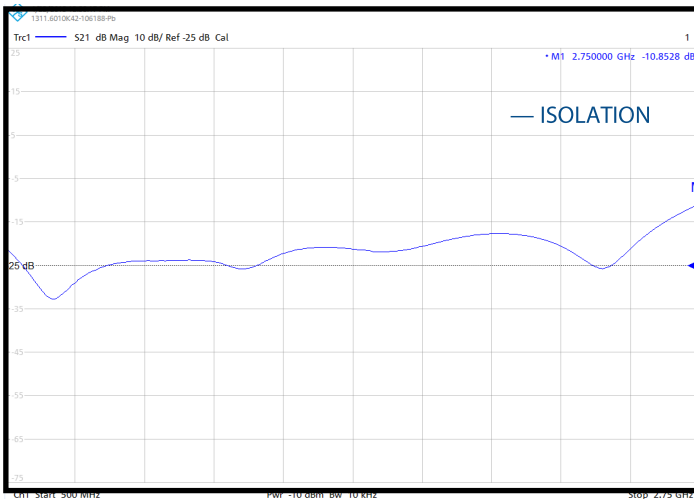
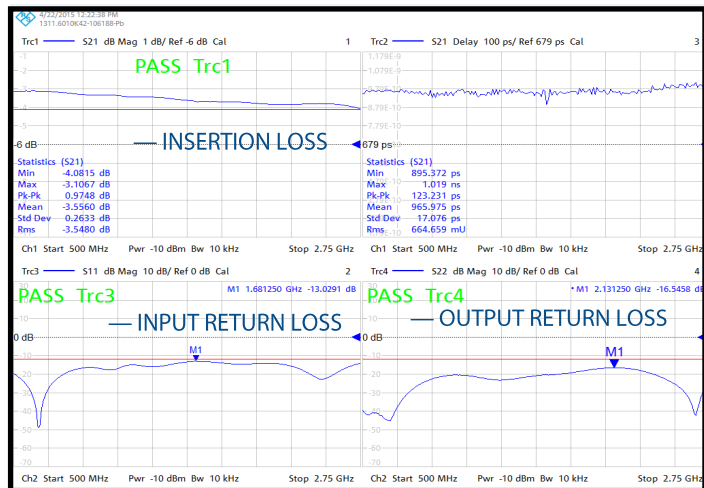
### SNG & VSAT



### Satellite Teleport



## Technical specifications and operating parameters

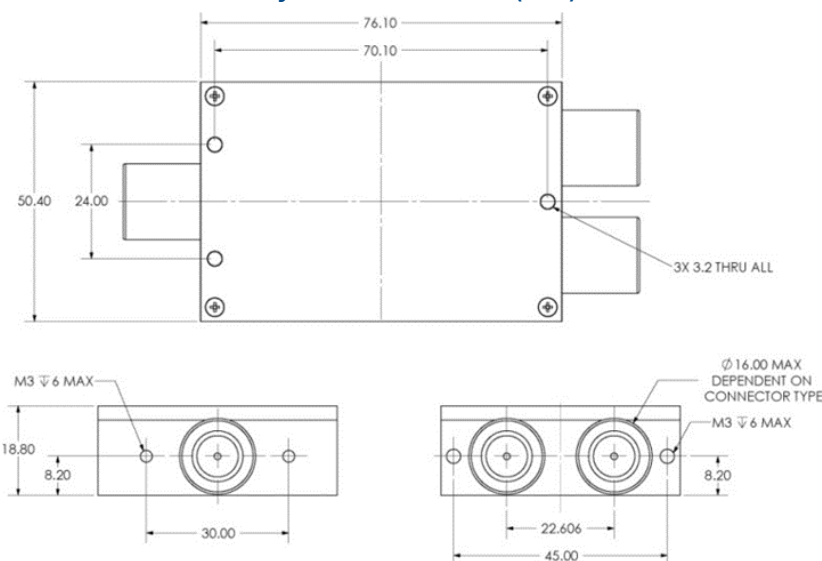


Environmental	
Operating Temperature	0°C to +45°C
Storage Temperature	-20°C to +75°C
Location	Indoor use Only
Humidity	Max. 85% non-condensing
Altitude	Max. 10,000 feet

Max Operating Parameters	
Input RF Power	+27dBm (500mW) as splitter +21 dBm (125mW) as combiner
DC Voltage	35V on any RF port
DC Current	500mA
DC Consumption	N/A

**!** Operation beyond these limits may cause instantaneous and permanent damage.

## Physical Dimensions (mm)



Note: The specification is subject to regular reviews and will be updated from time to time as part of our continuing product development and improved specification accuracy.