



Model Number:  
**EQUL1P-4551**

RF Components

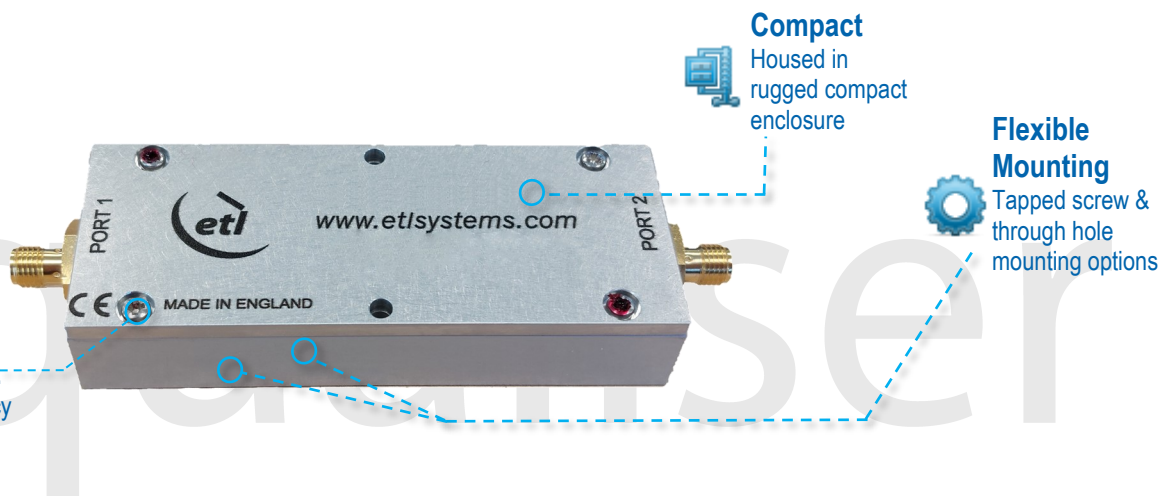
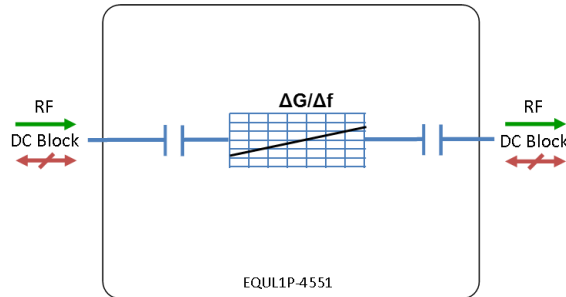
# 3 dB Positive Slope Equaliser

## 900 - 1500 MHz

- DC blocked between ports
- 3dB slope equaliser

Available with RF connectors:

- 50  $\Omega$  SMA



RF Parameters		
EQUL1P-4551		S5S5
Frequency Range		900 - 1500
RF Connectors		50 $\Omega$ SMA
Mean Insertion Loss @ 1500 MHz (dB)		3 $\pm$ 0.3
Slope Positive (dB)		3.0 $\pm$ 0.5
Input Return Loss (dB)	Typ.	23
	Min	18
Output Return Loss (dB)	Typ.	23
	Min	18

### Broadcast



### Marine Oil & Gas



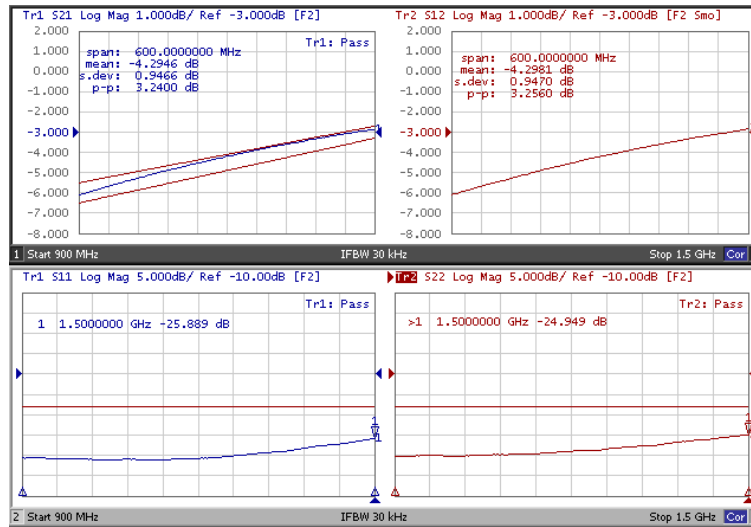
### SNG & VSAT



### Satellite Teleport



**Technical specifications and operating parameters**

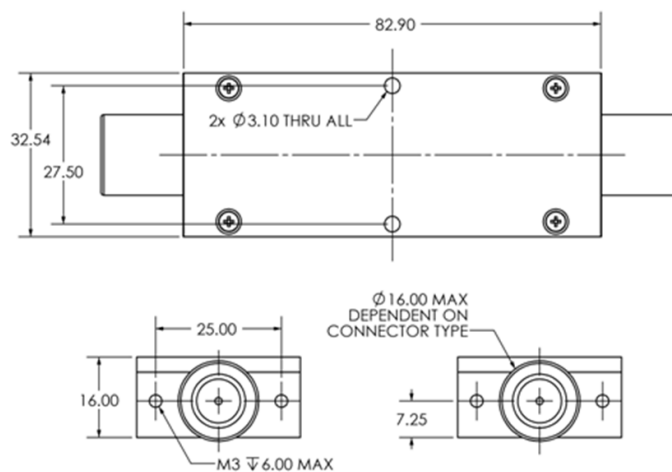


Environmental		
Operating Temperature		0°C to +45°C
Storage Temperature		-20°C to +75°C
Location		Indoor use Only
Humidity	Max	85% non-condensing
Altitude	Max	3,000m (~10,000 feet) AMSL

Max Operating Parameters	
Input RF Power	30 dBm (1W)
DC Voltage	30V on any RF port
DC Current	N/A

**!** Operation beyond these limits may cause instantaneous and permanent damage.

**Physical Dimensions (mm)**



Note: The specification is subject to regular reviews and will be updated from time to time as part of our continuing product development and improved specification accuracy.