

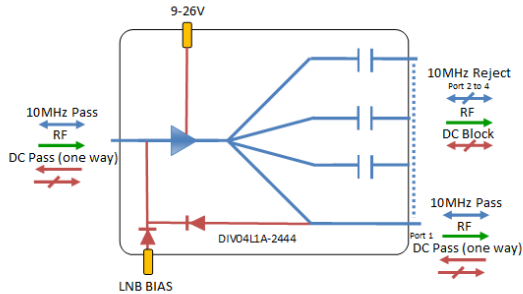


RF Components

4-way L-Band Active Splitter

850-2150 MHz

Model Number:
DIV04L1A-2444



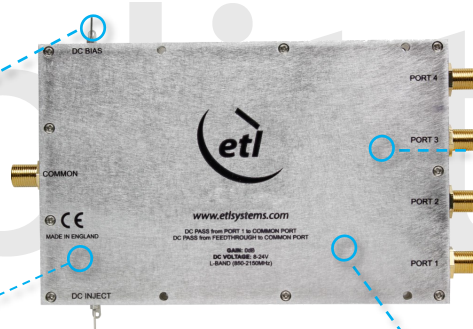
- DC & 10 MHz pass from Port 1 to the common port
- All other ports are DC & 10 MHz blocked
- Current flow is restricted in one direction, into the common port only
- Separate DC inject port to facilitate LNB inject

Available with RF connector options:

- 50 Ω SMA
- 50 Ω N-type
- 50 Ω BNC
- 75 Ω BNC
- 75 Ω F-type

9-26V
External DC
powering

850-2150 MHz
Operating frequency
range.



Compact
Housed in
rugged compact
enclosure

**Flexible
Mounting**
Tapped screw &
through hole
mounting options

RF Parameters					
DIV04L1A-2444-XXXX	S5S5	N5N5	B5B5	B7B7	F7F7
Frequency Range	850—2150 MHz				
RF Connectors	50 Ω SMA	50 Ω N-Type	50 Ω BNC	75 Ω BNC	75 Ω F-Type
Mean Gain (dB)	0 \pm 1.0	0 \pm 1.0	0 \pm 1.4	0 \pm 2.0	0 \pm 2.0
Flatness \pm (dB)	0.5	0.5	0.75	1.0	1.0
Input Return Loss (dB)	Typ.	18	18	16	14
	Min	12	12	12	8
Output Return Loss (dB)	Typ.	18	18	16	14
	Min	12	12	12	8
Output P1dB GCP** (dBm)	Typ.	0	0	0	2
	Min	-2	-2	-2	0
Isolation (dB)	Typ.	25	25	25	25
Output IP3 (dBm)	Typ.	15	15	15	15
Noise Figure (dB)	Typ.	7	7	7	7
10MHz Rejection is 25dB* *To ports which are applicable **GCP (Gain Compression Point)					

Broadcast



Marine Oil & Gas



SNG & VSAT



Satellite Teleport



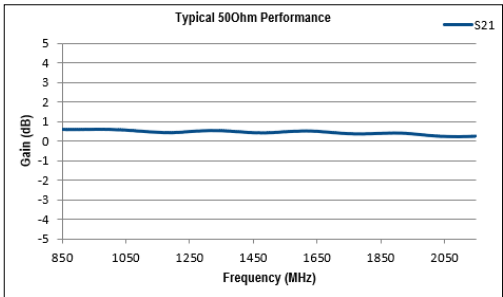


RF Components

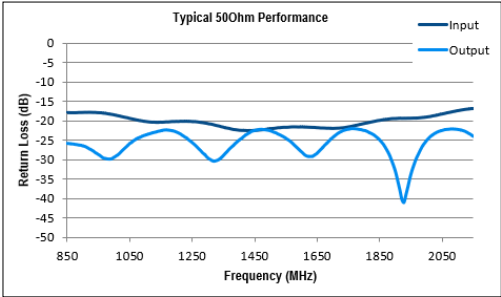
Model Number:
DIV04L1A-2444

4-way L-Band Active Splitter

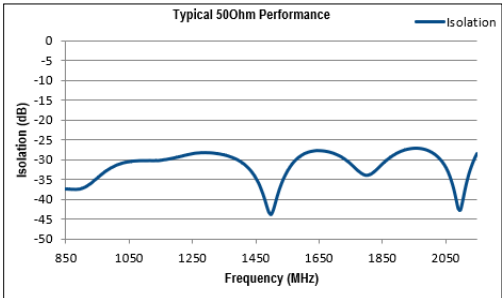
Technical specifications and operating parameters



Gain (dB)



Return Loss (dB)



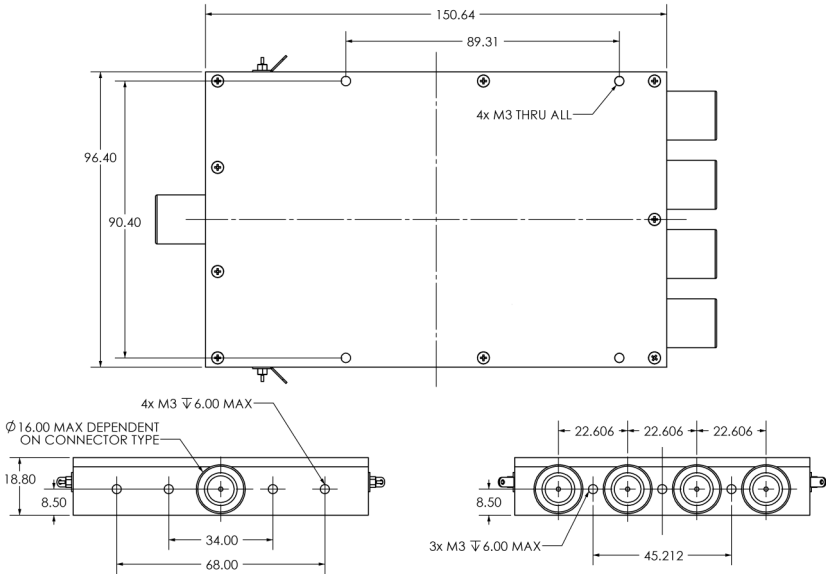
Isolation (dB)

Environmental		
Operating Temperature		0°C to +45°C
Storage Temperature		-20°C to +75°C
Location		Indoor use Only
Humidity	Max	85% non-condensing
Altitude	Max	10,000 feet

Max Operating Parameters		
Input RF Power		+16 dBm (40mW)
DC Voltage		35V on any RF port
DC Current	Max	1A Max total current
DC Consumption		100mA Max, 80mA typical

! Operation beyond these limits may cause instantaneous and permanent damage.

Physical Dimensions (mm)



Note: The specification is subject to regular reviews and will be updated from time to time as part of our continuing product development and improved specification accuracy.

ETL SYSTEMS LIMITED
Coldwell Radio Station
Madley
Hereford
England HR2 9NE

TELEPHONE
+44 (0)1981 259020

EMAIL
info@etlsystems.com

FACSIMILE
+44 (0)1981 259021

WEB
www.etlsystems.com

