

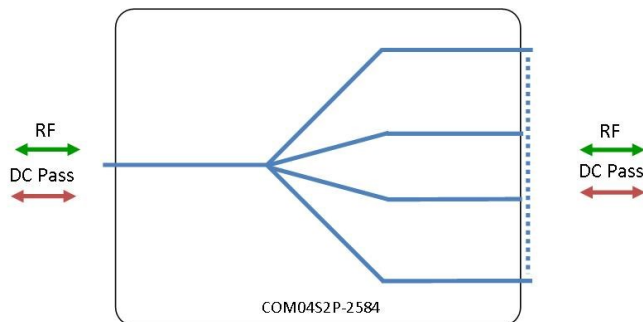


RF Components

# 4-Way S-Band Passive Splitter/Combiner

850 - 2500 MHz

Model Number:  
**COM04S2P-2584**



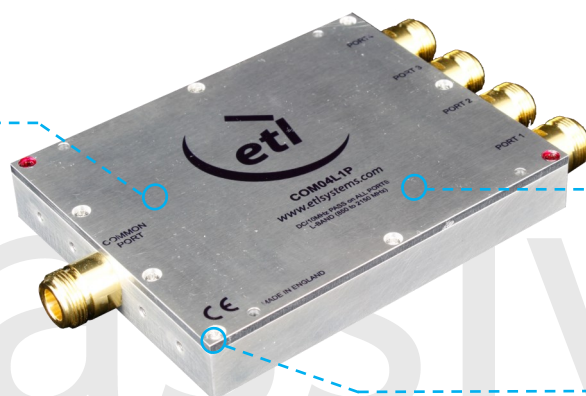
- DC pass on all ports.

Available with RF connector options:

- 50  $\Omega$  SMA
- 50  $\Omega$  N-type



**850 - 2500 MHz**  
Operating frequency range.



**Compact**  
Housed in rugged compact enclosure



**Flexible Mounting**  
Tapped screw & through hole mounting options

| RF Parameters  |      |                  |                    |
|--|------|------------------|--------------------|
| COM04S2P-2584 -XXXX  |      | S5S5             | N5N5               |
| Frequency Range  |      | 850 - 2500 MHz   |                    |
| RF Connectors  |      | 50 $\Omega$ SMA  | 50 $\Omega$ N-Type |
| Insertion Loss (dB)  | Typ. | 1.2              | 1.2                |
|  | Max  | 2.2              | 2.2                |
| Flatness $\pm$ (dB)  |      | 0.5              | 0.5                |
| Input Return Loss (dB)   | Typ. | 18               | 18                 |
|  | Min  | 10               | 10                 |
| Output Return Loss (dB)  | Typ. | 18               | 18                 |
|  | Min  | 10               | 10                 |
| Isolation (dB)   | Typ. | 18               | 18                 |
| Amplitude Balance (dB)   |      | $\leq 0.15$      | $\leq 0.15$        |
| Phase Balance ( $\Phi$ )   |      | $\leq 0.8^\circ$ | $\leq 0.8^\circ$   |
| The given Insertion Loss specified is the loss above the theoretical limit for a lossless divider<br>10MHz Insertion Loss is up to 3dB above the theoretical loss*<br>*To ports which are applicable |      |                  |                    |

## Broadcast



## Marine Oil & Gas



## SNG & VSAT



## Satellite Teleport



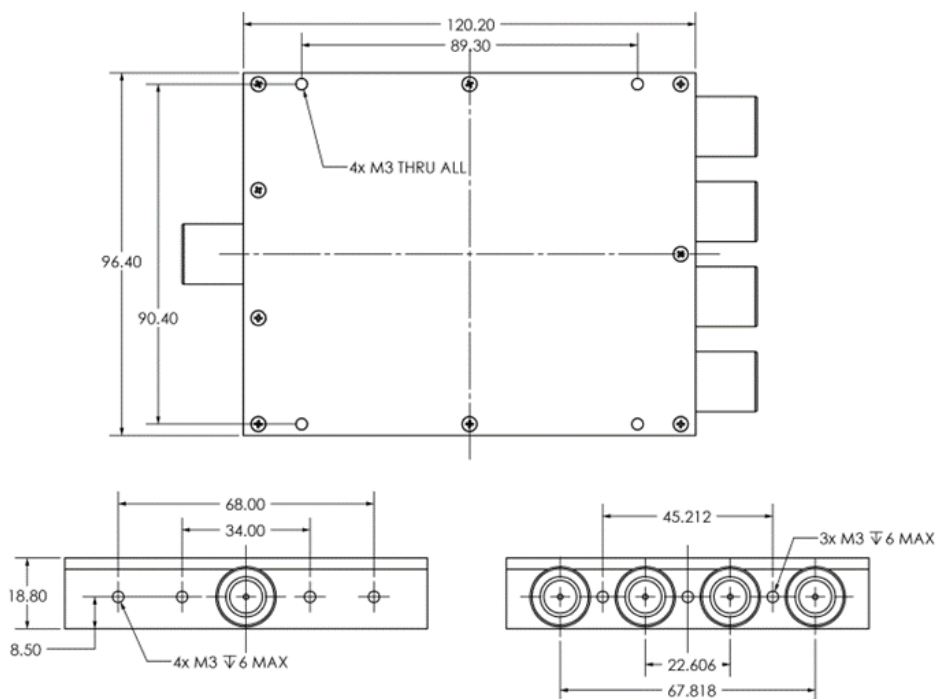
### Technical specifications and operating parameters

| Environmental         |                         |
|-----------------------|-------------------------|
| Operating Temperature | 0°C to +45°C            |
| Storage Temperature   | -20°C to +75°C          |
| Location              | Indoor use Only         |
| Humidity              | Max. 85% non-condensing |
| Altitude              | Max. 10,000 feet        |

| Max Operating Parameters |                       |
|--------------------------|-----------------------|
| Input RF Power           | +37 dBm (5W)          |
| DC Voltage               | 50V on any RF port    |
| DC Current               | 5A max on any RF port |

**!** Operation beyond these limits may cause instantaneous and permanent damage.

### Physical Dimensions (mm)



Note: The specification is subject to regular reviews and will be updated from time to time as part of our continuing product development and improved specification accuracy.