

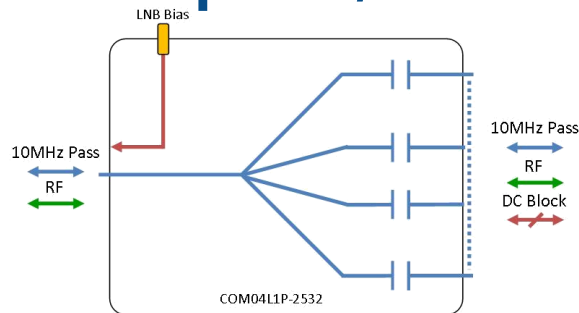


RF Components

4-Way L-Band Passive Splitter/Combiner

850 - 2150 MHz

Model Number:
COM04L1P-2532



- DC inject to common port
- All RF ports DC blocked
- All RF ports 10 MHz pass

Available with RF connector options:

- 50 Ω SMA
- 50 Ω N-type
- 50 Ω BNC
- 75 Ω BNC
- 75 Ω F-type.



850-2150 MHz
Operating frequency range. L-Band ready



Compact
Housed in rugged compact enclosure



Flexible Mounting
Tapped screw & through hole mounting options

RF Parameters					
COM04L1P-2532-XXXX	S5S5	N5N5	B5B5	B7B7	F7F7
Frequency Range	850 - 2150 MHz				
RF Connectors	50 Ω SMA	50 Ω N-Type	50 Ω BNC	75 Ω BNC	75 Ω F-Type
Mean Insertion Loss (dB)	0.6 ± 0.3	0.6 ± 0.3	0.6 ± 0.3	0.6 ± 0.3	0.6 ± 0.3
Flatness \pm (dB)	0.5	0.5	0.5	0.5	0.5
Input Return Loss (dB)	Typ.	20	20	20	20
	Min	16	16	16	16
Output Return Loss (dB)	Typ.	20	20	23	23
	Min	16	16	16	16
Isolation (dB)	Typ.	28	28	28	28
	Min	20	20	20	20
Amplitude Balance (dB)	≤ 0.5	≤ 0.5	≤ 0.5	≤ 0.5	≤ 0.5
Phase Balance (Φ)	$\leq 5^\circ$	$\leq 5^\circ$	$\leq 5^\circ$	$\leq 5^\circ$	$\leq 5^\circ$
The given Insertion Loss specified is the loss above the theoretical limit for a lossless divider 10MHz Insertion Loss is up to 3dB above the theoretical loss* 10MHz Rejection is 40dB* *To ports which are applicable					

Broadcast



Marine Oil & Gas



SNG & VSAT



Satellite Teleport

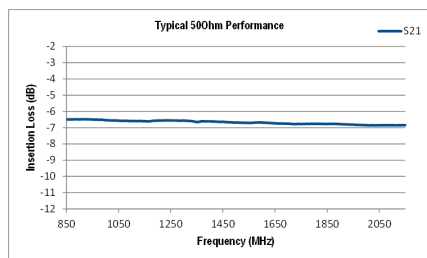




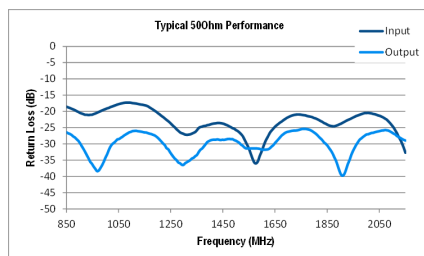
RF Components

Model Number:
COM04L1P-2532

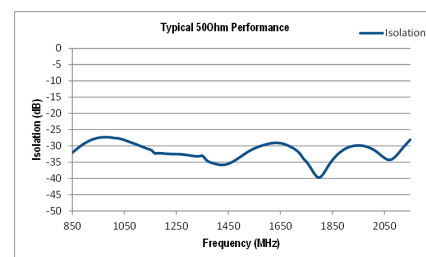
4-Way L-Band Passive Splitter/Combiner



Insertion Loss (dB)



Return Loss (dB)



Isolation (dB)

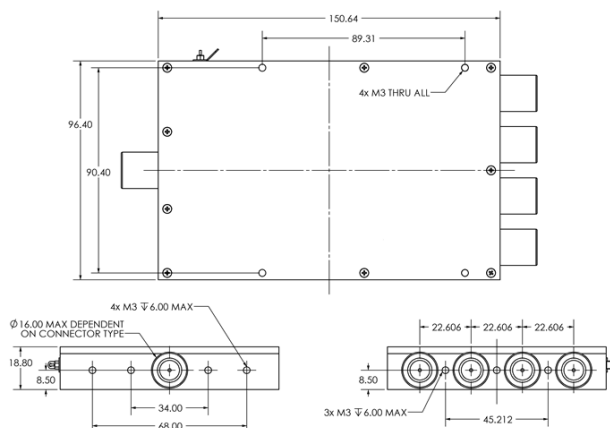
Technical specifications and operating parameters

Environmental		
Operating Temperature		0°C to +45°C
Storage Temperature		-20°C to +75°C
Location		Indoor use Only
Humidity	Max.	85% non-condensing
Altitude	Max.	10,000 feet

Max Operating Parameters	
Input RF Power into matched load with 20dB return loss	+27dBm (500mW) as combiner +37dBm (5W) as splitter
DC Voltage	35V on any RF port
DC Current	2A
DC Consumption	N/A

! Operation beyond these limits may cause instantaneous and permanent damage.

Physical Dimensions (mm)



Note: The specification is subject to regular reviews and will be updated from time to time as part of our continuing product development and improved specification accuracy.

ETL SYSTEMS LIMITED
Coldwell Radio Station
Madley
Hereford
England HR2 9NE

TELEPHONE
+44 (0)1981 259020

EMAIL
info@etlsystems.com

FACSIMILE
+44 (0)1981 259021

WEB
www.etlsystems.com

