



RF Components

# 4-Way C-Band Active Combiner

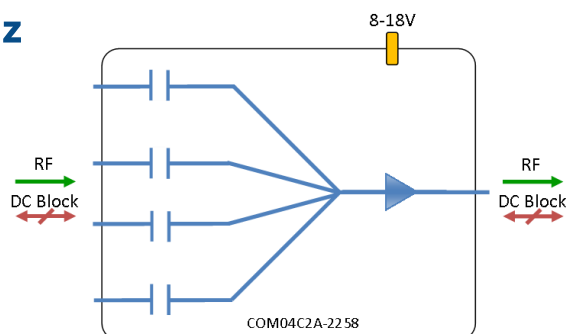
5800 - 6500 MHz

Model Number:  
**COM04C2A-2258**

- With unity gain
- All port DC blocked
- Require 8-18V external DC bias

Available with RF connector options:

- 50  $\Omega$  SMA
- 50  $\Omega$  N-type



**8-18V**  
External DC  
powering



## Compact

Housed in  
rugged compact  
enclosure

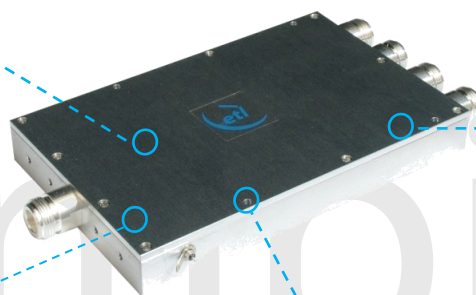


## Flexible Mounting

Tapped screw &  
through hole  
mounting options



**5800 - 6500 MHz**  
Operating frequency  
range. L-Band ready



RF Parameters		
COM04C2A-2258	S5S5	N5N5
Frequency Range	5800 - 6500 MHz	
RF Connectors	50 $\Omega$ SMA	50 $\Omega$ N-Type
Gain (dB)	$0 \pm 2$	$0 \pm 2$
Input Return Loss (dB)	Typ.	16
	Min	12
Output Return Loss (dB)	Typ.	16
	Min	10
Output P1dB GCP** (dBm)	Typ.	2
	Min	0
Isolation (dBm)	Typ.	20
Output IP3(dBm)	Typ.	12
Noise Figure (dB)	Typ.	15
10MHz Rejection is 20dB*		
*To ports which are applicable		
**GCP (Gain Compression Point)		

## Broadcast



## Marine Oil & Gas



## SNG & VSAT



## Satellite Teleport



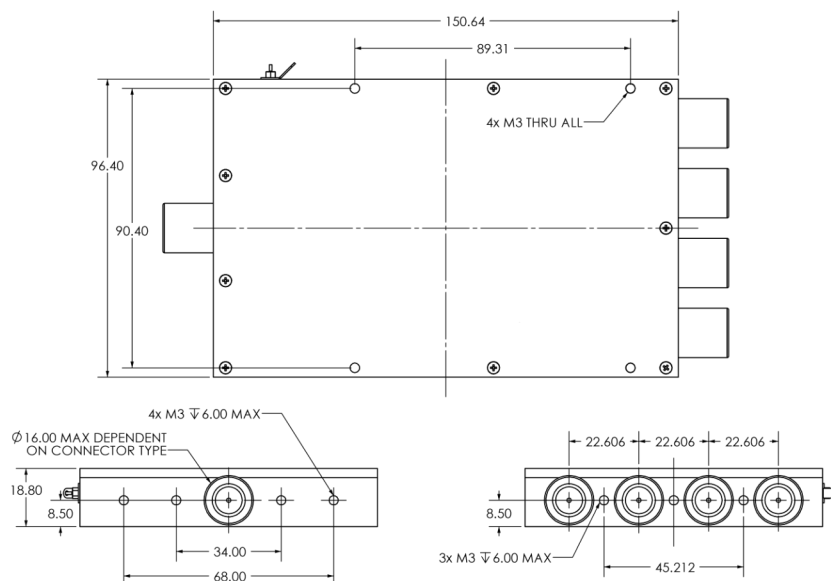
## Technical specifications and operating parameters

Environmental		
Operating Temperature		0°C to +45°C
Storage Temperature		-20°C to +75°C
Location		Indoor use Only
Humidity	Max	85% non-condensing
Altitude	Max	10,000 feet

Max Operating Parameters	
Input RF Power	+21 dBm (125mW)
DC Voltage	35V on any RF port
DC Consumption	100mA max, 80mA typ

**!** Operation beyond these limits may cause instantaneous and permanent damage.

## Physical Dimensions (mm)



Note: The specification is subject to regular reviews and will be updated from time to time as part of our continuing product development and improved specification accuracy.