

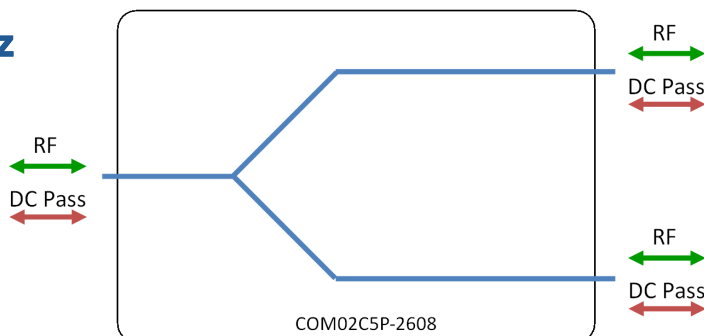


RF Components

Model Number:  
**COM02C5P-2608**

## 2-Way C-Band Passive Splitter/Combiner

**850 - 4200 MHz**



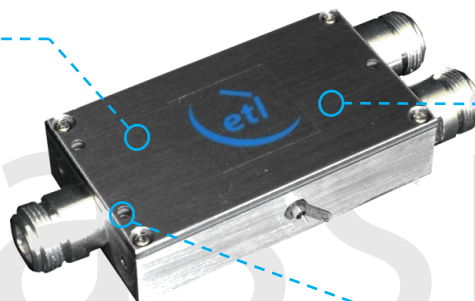
- All RF ports DC pass

Available with RF connector options:

- 50  $\Omega$  SMA
- 50  $\Omega$  N-type



**850-4200 MHz**  
Operating frequency  
range. C-Band ready



### Compact

Housed in  
rugged compact  
enclosure



### Flexible Mounting

Tapped screw &  
through hole  
mounting options

RF Parameters		
COM02C5P-2608-XXXX	S5S5	N5N5
Frequency Range	850-4200 MHz	
RF Connectors	50 $\Omega$ SMA	50 $\Omega$ N-Type
Mean Insertion Loss (dB)	0.4 $\pm$ 0.3	0.4 $\pm$ 0.3
Flatness $\pm$ (dB)	0.6	0.6
Input Return Loss (dB)	Typ.	16
	Min	12
Output Return Loss (dB)	Typ.	19
	Min	16
Isolation (dB)	Typ.	18
Amplitude Balance (dB)	$\leq$ 0.5	$\leq$ 0.5
Phase Balance ( $\Phi$ )	$\leq$ 5 $^\circ$	$\leq$ 5 $^\circ$
The given Insertion Loss specified is the loss above the theoretical limit for a lossless divider		

### Broadcast



### Marine Oil & Gas



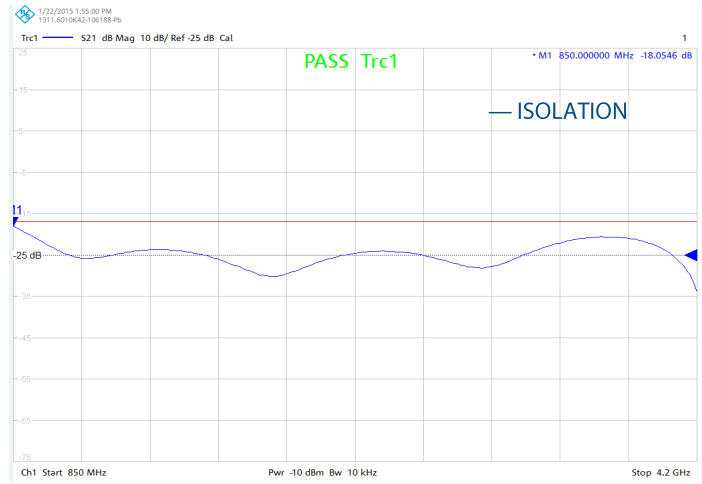
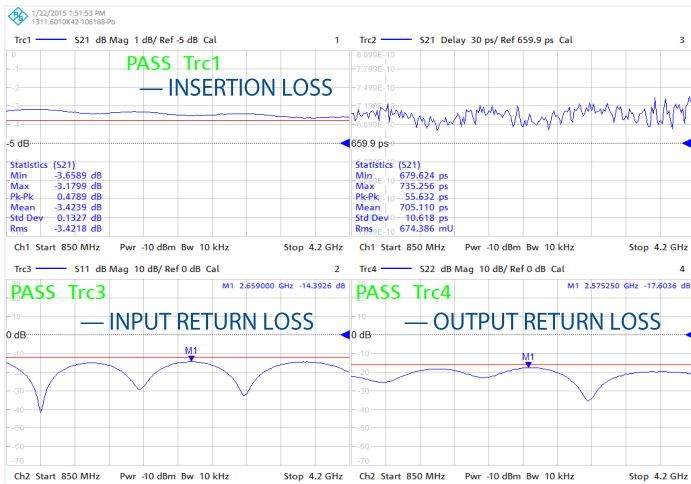
### SNG & VSAT



### Satellite Teleport



## Technical specifications and operating parameters

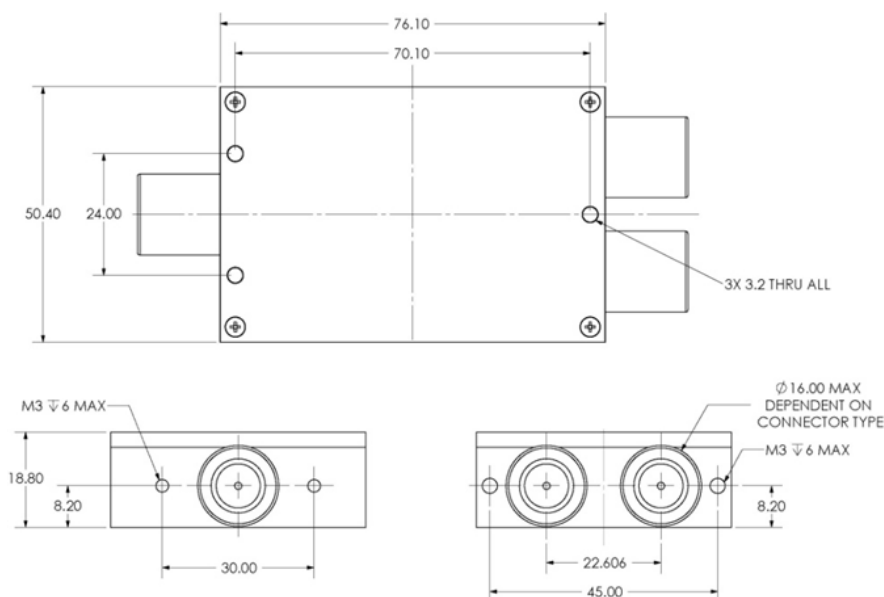


Environmental	
Operating Temperature	0°C to +45°C
Storage Temperature	-20°C to +75°C
Location	Indoor use Only
Humidity	Max. 85% non-condensing
Altitude	Max. 10,000 feet

Max Operating Parameters	
Input RF Power into matched load with 20dB return loss	+27dBm (500mW) as combiner +37dBm (5W) as splitter
DC Voltage	35V on any RF port
DC Current	500mA
DC Consumption	N/A

! Operation beyond these limits may cause instantaneous and permanent damage.

## Physical Dimensions (mm)



Note: The specification is subject to regular reviews and will be updated from time to time as part of our continuing product development and improved specification accuracy.