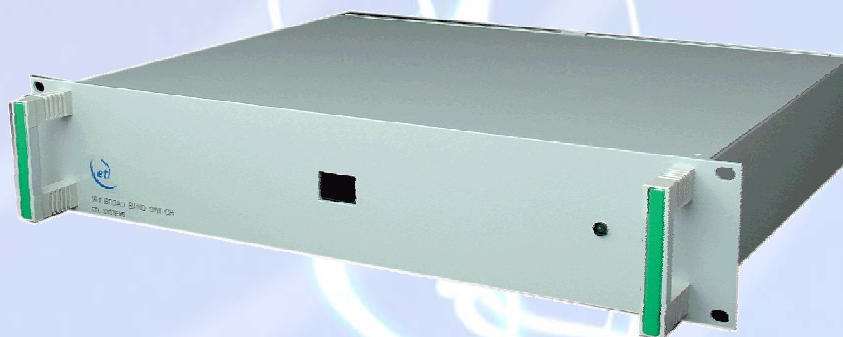


16 x 1 IF through L-Band Remote Control Switch



This is a high performance 16 way IF through L-Band switch designed primarily for signal monitoring. Remote control is via a RS 232 or RS 422/485 serial port and a version with ethernet control is available. As with all ETL switches the simple serial protocol facilitates rapid integration into most M&C systems.



This unit has single power supplies and 50 ohm BNC connectors but others are available (model numbers will vary). The switch also has an internal termination position in which no input is connected to the output.



RESILIENCE FLEXIBILITY RF PERFORMANCE

ETL Model Number – 23147-B5

Technical Specifications



• RF Parameters

RX Capacity	16 x 1
Frequency Range	50-2150 MHz
Gain	1dB \pm 1dB nominal
Flatness	\pm 1.5dB
Input Return Loss	15dB typical
Output Return Loss	15dB typical
Isolation IP to OP	> 50dB
Isolation IP to IP	> 55dB
Noise Figure	8dB
1dB Compression Point	+5dBm

• System Control

Remote Connection	RS232 or RS422/485 (for ethernet see model 23145)
-------------------	--

• Key Features

LED Display	2 digit display to show selected input (or 0 if the output is terminated)
PSU	Single
Alarms	Dry contact for PSU failure

• Environmental

Operating Temperature	0 to 45°C
Location	Indoor Use Only
Storage Temperature	-20°C to +75°C
Humidity	20-90% Non Condensing

• Physical

Connectors	BNC
Impedance	50 Ω
Dimensions	2U x 450mm x 19"
Weight (fully populated)	6 Kgs
Colour	Light grey (RAL 7035)

• Power

Power Requirement	85/264V AC, 50/60 Hz
LNB Power	Not available



ETL Model Number – 23145-B5

ETL Systems develop, design and manufacture specialist equipment for satellite ground stations. For a fuller description of the ETL product range, please visit our website. This range can be used as the basis to meet your specific demands.



For additional information or details, please contact us at:

ETL Systems Limited, Coldwell Radio Station, Madley, Hereford, England HR2 9NE
T +44 (0)1981 259825 F +44 (0)1981 259839 E info@etlsystems.com www.etlsystems.com

