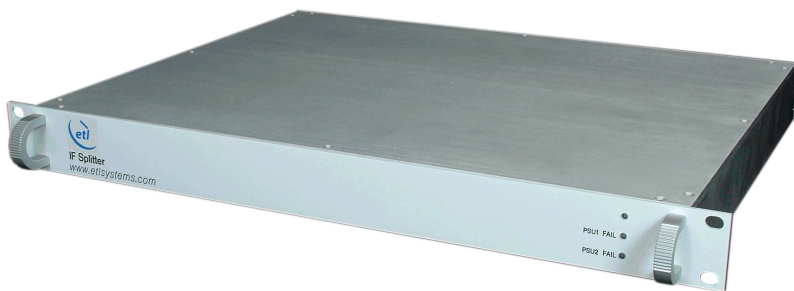




Model Number: **D0108S1UIA-B5B5**

RF Engineering
and Custom Build

8-way Single IF Active Splitter



This single 8-way IF active splitter, covers the 20-200MHz frequency range, and is housed in a 1U high shelf. The unit benefits from dual redundant power supplies for reliability in service.

Front View of Model D0108S1UIA-B5B5

Monitoring of the dual redundant power supplies can be done via front panel LEDs which provide a visual status of the power supplies and via a dry contact alarm port on the rear panel.



Rear View of Model D0108S1UIA-B5B5

This particular unit is supplied with 50 ohm BNC RF connectors, but is available in a variety of impedances and connector types (model numbers will vary).





Model Number: D0108S1UIA-B5B5

RF Engineering
and Custom Build

8-way Single IF Active Splitter

Technical specifications and operating parameters

RF Parameters		
Capacity	8- way	
Frequency Range	20-200 MHz (IF)	
Gain	1 dB \pm 1 dB nominal mean across band	
Frequency Response	20-200MHz	\pm 0.4 dB
	Over any 36MHz	\pm 0.25 dB
1dB Compression	0 dBm	
Noise Figure	7 dB	
Input Return Loss	12 dB typical	
Output Return Loss	20 dB typical	

System Control	
Display	Front Panel LED's for Power & PSU status
Alarms	Dry contact alarm port on rear panel for PSU failure

Environmental	
Operating temperature	0 to 45°C
Location	Indoor use only
Storage temperature	-20°C to +75°C
Humidity	85% non-condensing

Physical	
Input Connectors	BNC
Input Impedance	50 Ω
Output Connectors	BNC
Output Impedance	50 Ω
Dimensions	1U high x 350mm deep x 19" wide
Weight	8 kg
Colour	White 00-E-55 semi-gloss (Front panel)

Power	
AC Power	90-264V AC (50/60Hz), Fused 2A
LNB Power	None
PSU	Dual Redundant
Hot-swap PSU	No

Key Features	
Dual redundant power supplies	
Front Panel LED's for Power & PSU status	
Dry contact alarm port for PSU failure	

ETL SYSTEMS LIMITED
Coldwell Radio Station
Madley
Hereford
England HR2 9NE

TELEPHONE
+44 (0)1981 259020

EMAIL
info@etlsystems.com

FACSIMILE
+44 (0)1981 259021

WEB
www.etlsystems.com

